

The highest priority EIP projects to achieve a resilient watershed

Upper Truckee Marsh South

The Conservancy plans to restore the site of a former motel, including the river corridor and floodplain between public lands at Johnson Meadow and the Upper Truckee Marsh. Activities may include removing fill, stabilizing banks, rewetting meadows, and removing conifers from the floodplain, while enhancing public access.

Johnson Meadow Restoration

Tahoe Resource Conservation District will restore this key middle section of the river system, filling an eroding gully channel, stabilizing the main river channel, and spreading flows to reconnect the floodplain.

Johnson Meadow Connector

The next shovel-ready phase of the Dennis T. Machida Memorial Greenway replaces a heavily used bike and pedestrian bridge destroyed by 2017 winter storms. El Dorado County seeks implementation funds to complete this critical trail, which will connect key segments of the south shore shared-use trail network.

Sunset Stables, Reach 6

The Conservancy is planning to restore the reach upstream of Lake Tahoe Airport, removing a major conifer encroachment from the wetlands, excavating fill, lowering floodplains, and improving aquatic habitats.

Lake Valley State Recreation Area, Reach 7

California State Parks is leading this project adjacent to the Lake Tahoe Golf Course. The project includes relocating or reconfiguring one golf course hole, constructing a bridge to allow non-motorized public access over the river, and restoring wetland and floodplain.

Wildlife Connectivity

The Upper Truckee River is a critical wildlife corridor; safe wildlife crossings are needed where the river and its tributaries cross major roadways. Partners intend to upgrade culverts and bridges, continue to map wildlife movement patterns, and are seeking funding to continue planning in priority areas.

Past investments and funding needs for priority projects over the next five years.

PROJECT	IMPLEMENTATION START	INVESTMENTS NEEDED	HISTORICAL INVESTMENTS INCLUDING ACQUISITIONS
Upper Truckee Marsh South	2028	\$18,000,000	\$18,850,000
Johnson Meadow Restoration Phase 1	2027	\$4,000,000	\$11,790,000
Johnson Meadow Restoration Phase 2	2028	\$13,000,000	
Sunset Stables, Reach 6	2027	\$4,000,000	\$2,500,000
Lake Valley State Recreation Area Restoration, Reach 7	2028	\$16,000,000	\$2,000,000
Wildlife Connectivity Planning	2029	\$5,000,000	\$500,000
Completed Restoration Projects & Associated Acquisitions			\$69,476,001
Total		\$60,000,000	\$103,481,001

Tahoe partnerships use nature-based solutions to advance the goals of the Lake Tahoe Environmental Improvement Program and implement key state strategies such as the California Climate Adaptation Strategy, Outdoors for All Strategy, and Pathways to 30x30 Strategy.

Published by the California Tahoe Conservancy, Spring 2026.



The Upper Truckee River represents a collaborative vision, 40 years in the making, for a restored and resilient watershed enjoyed by all. The health of Lake Tahoe relies on the Upper Truckee River watershed. The river and adjacent areas also hold particular importance to the wašī-šiw (Washoe people—the people from here), who stewarded these lands for

millennia and protected habitats for culturally significant plants and animals.

Since the 1980s, agencies and conservationists have taken a coordinated approach to restoring the river. **Now, 40 years later, only a handful of projects remain to achieve conservation goals.**

Lake Tahoe's Most Important Tributary

The Upper Truckee River is the largest of Lake Tahoe's 63 tributaries, and its watershed has the Basin's largest wetlands, each with value beyond its size for habitat, climate resilience, and water quality protection. As such, the river's health has the greatest consequences for the Basin's ecosystems and the Lake.

Decades of Progress

Recognizing the significance of the river, Basin agencies began collaborating to acquire and protect these critical habitats in the 1980s. Through the Lake Tahoe Environmental Improvement Program (EIP), federal, Tribal, state, regional, local, and private partners are investing in a vision for a resilient watershed. Organizations like Tahoe Fund and Keep Tahoe Blue play critical roles in supporting acquisitions and projects through funding and advocacy. Partners have

invested more than \$100 million from public and private sources to acquire and restore lands along the river. Public land ownership now extends nearly uninterrupted from the community of Meyers downstream to Lake Tahoe.

The California Tahoe Conservancy, City of South Lake Tahoe, and USDA Forest Service Lake Tahoe Basin Management Unit have completed river and floodplain restoration in the Upper Truckee Marsh and areas adjacent to Lake Tahoe Airport. These projects restored ecological processes and improved water quality and drought resilience and provide refugia from the impacts of climate change. Partners aim to restore a total of approximately 1000 acres of wetland and 11 miles of river and have completed almost half of these amounts. Today, climate change threatens our progress. We must complete restoration to ensure a resilient environment that benefits all into the future.

An Opportunity for Watershed Resilience

Completing the work will ensure connectivity for people and wildlife, protect tribal assets and values, and provide refuge from climate change. Completing work in the Upper Truckee River Watershed builds upon progress partners have made to date—despite the compounding challenges of a changing climate—and will fulfill goals of the EIP and California initiatives.

Upper Truckee Marsh South



OPPORTUNITY TO restore wetlands after removing development from the floodplain.

Dennis T. Machida Memorial Greenway, Johnson Meadow Connector



OPPORTUNITY TO connect key shared-use trails.

Connectivity & Corridors



OPPORTUNITY TO provide safe wildlife crossings at roadways. | PHOTO: Pathways for Wildlife / Wildlands Network

- Greenway, Johnson Meadow Connector
- Potential Future Greenway
- Class I Shared-Use Trails
- Local, State, and Federal Public Lands

Lake Tahoe

South Lake Tahoe

Dennis T. Machida Memorial Greenway

Upper Truckee River

Johnson Meadow



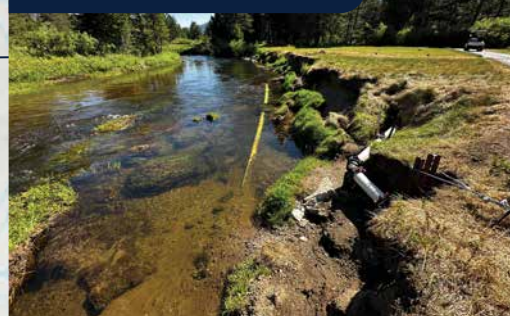
OPPORTUNITY TO spread and filter flows on floodplain in the center of the river system.

Sunset Stables, Reach 6



OPPORTUNITY TO remove encroaching trees to restore meadow habitat.

Lake Valley State Recreation Area, Reach 7



OPPORTUNITY TO relocate a golf hole and re-establish floodplain.
PHOTO: California State Parks

Multiple-Benefit Projects and Acquisitions in the Upper Truckee River Watershed

- Improve resilience to climate change, including increases in extreme floods, droughts, and wildfires.
- Protect Lake Tahoe's clarity by reducing erosion and restoring floodplains to act as natural pollution filters.
- Protect and enhance habitat, biodiversity, climate refugia, and wildlife corridors, and remove invasive species.
- Capture more carbon. Healthy meadows provide net carbon storage; degraded meadows are net carbon emitters to the atmosphere.
- Remove environmentally harmful development from wetlands, supporting state and regional plans to foster sustainable communities.
- Preserve and enhance opportunities for all people to experience and enjoy the unique ecosystem and environment.
- Promote safe alternative transportation connections to the river, community destinations, and recreational amenities—reducing traffic congestion, improving public health, and increasing access for all.

Restoring the River

Basin Partners are planning new large-scale restoration projects along the river corridor. River and wetland restoration rewets meadows and improves critical habitats.

Improving Wildlife Connectivity

We are improving wildlife connectivity along and across the river corridor, while pursuing opportunities to reintroduce the endangered Lahontan Cutthroat Trout.

Expanding the Shared-Use Trail Network

We are connecting key segments of the network of paved trails for people walking, biking, and rolling. Partners are elevating trails where wetland crossings are necessary, protecting habitats and allowing wildlife movement.

Enhancing Public River Access

We are expanding and improving river access to educate visitors and enhance accessibility. The river corridor provides widespread opportunities for picnicking, sportfishing, biking, hiking, paddling, birdwatching, and swimming.

Supporting Washoe Tribal Leadership

The watershed presents important opportunities for the Washoe Tribe of Nevada and California for Tribal access and co-management, cultural burning, and culturally significant plant establishment and harvest.