

3 Improve Connections

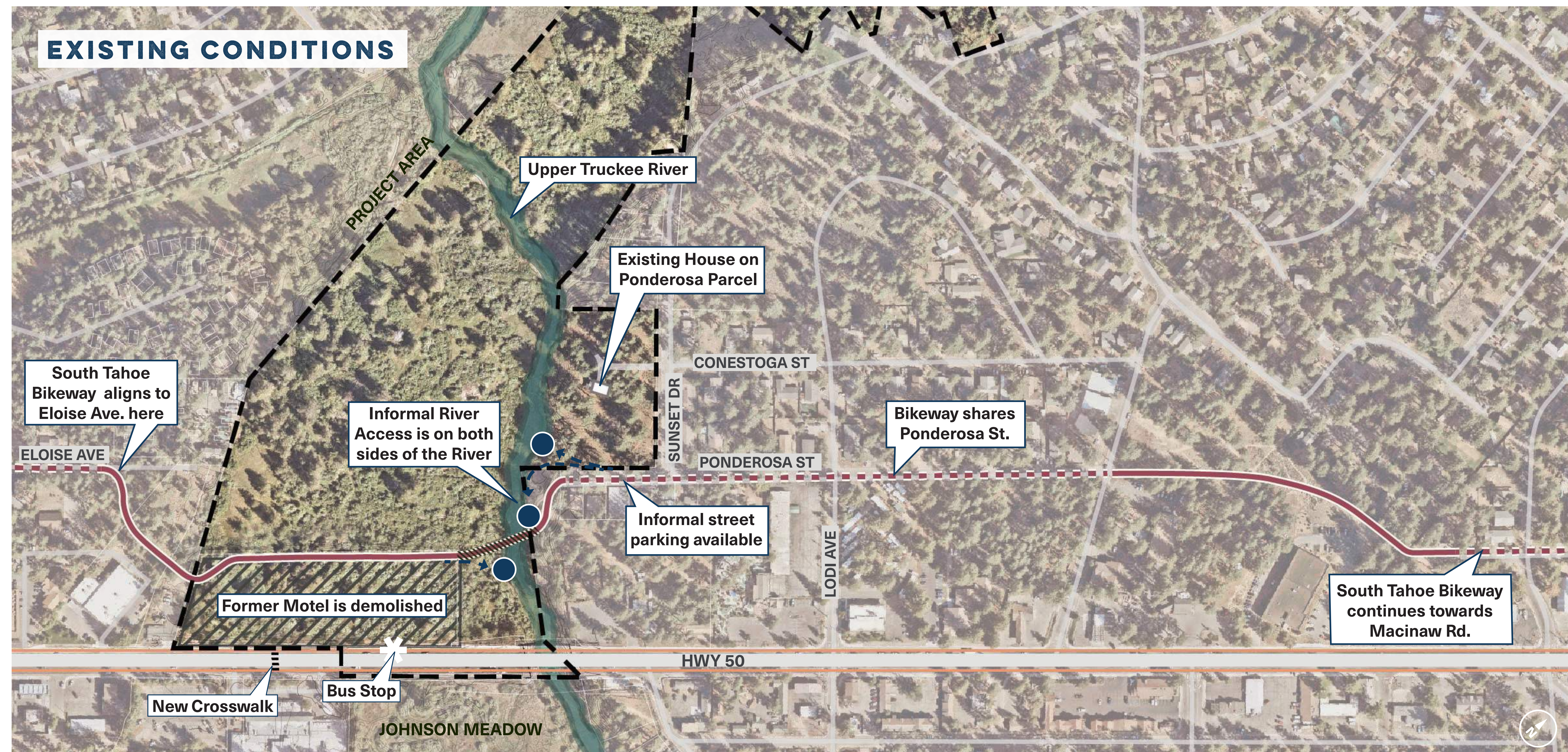
SOUTH TAHOE BIKEWAY

With the demolition of the former motel and opportunities to remove the motel fill, the Conservancy seeks to realign the bikeway through the marsh while limiting disturbance on the restoration actions. Strengthening this connection has been a long-standing community priority, and recent outreach has shown broad support for improving access while protecting habitat.

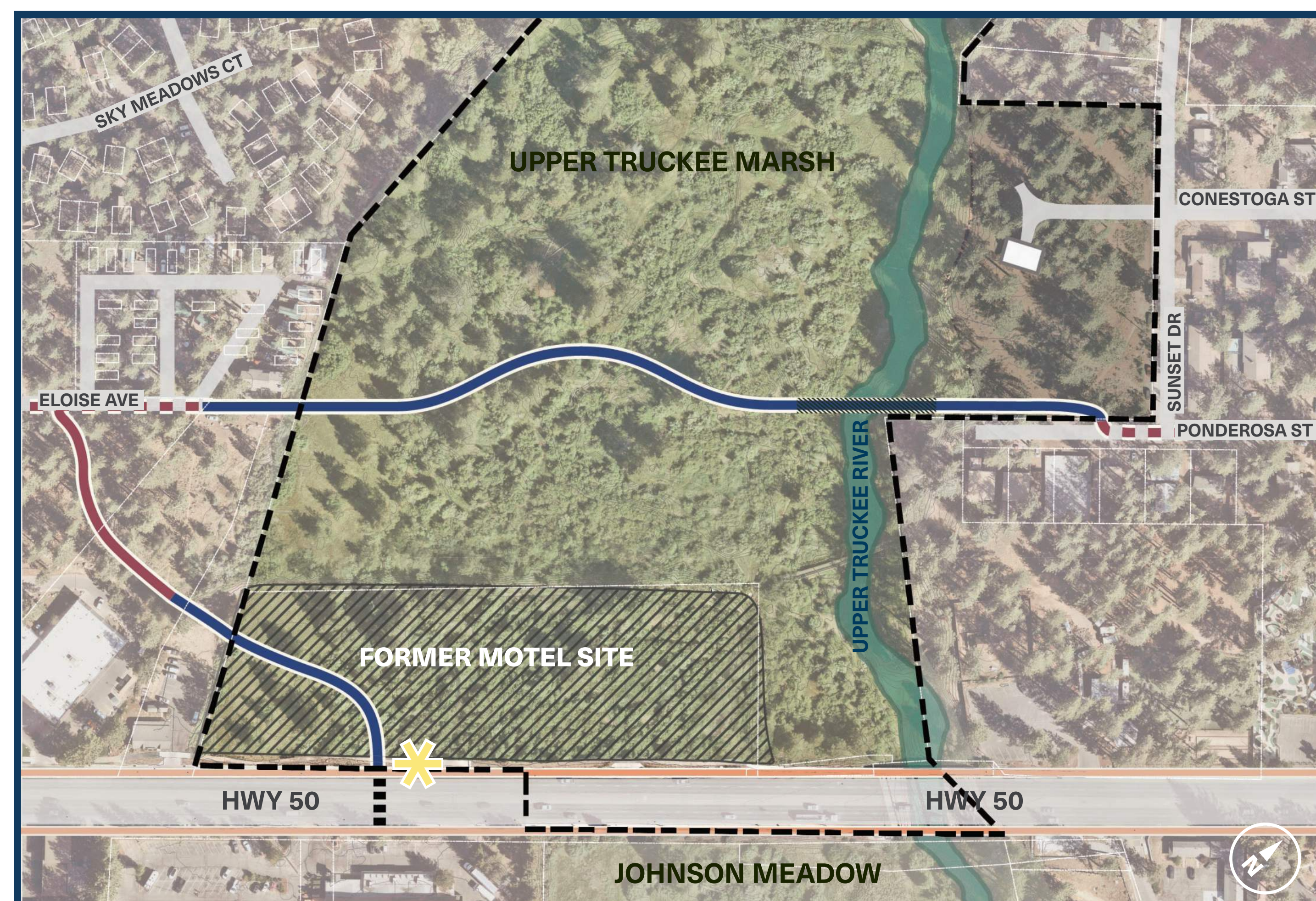
The three concepts below illustrate different alignment options. These routes are not stand alone and can be mixed and matched. For example, where the bikeway joins Eloise in Concept 2, could transition to the Conestoga alignment in Concept 3.

KEY

- Project Boundary
- Existing Bikeway
- Proposed Bikeway
- Existing Sidewalk
- River Access
- ✱ Bus Stop Relocation
- Existing House
- ||||| New Crosswalk
- Upper Truckee River
- Upper Truckee Marsh
- Former Motel Site
- Upland Forest

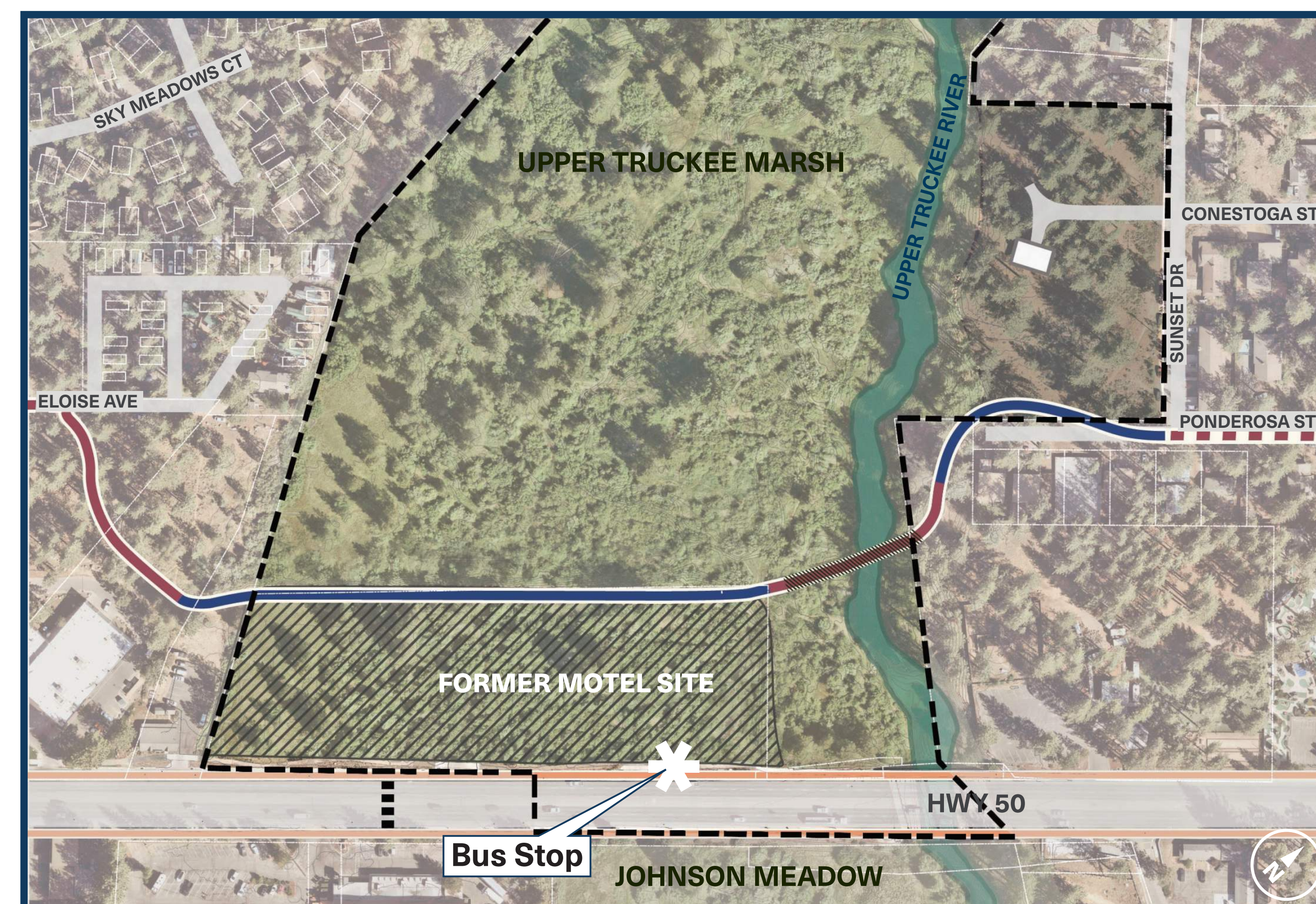


CONCEPT 1 COMMUTER FRIENDLY



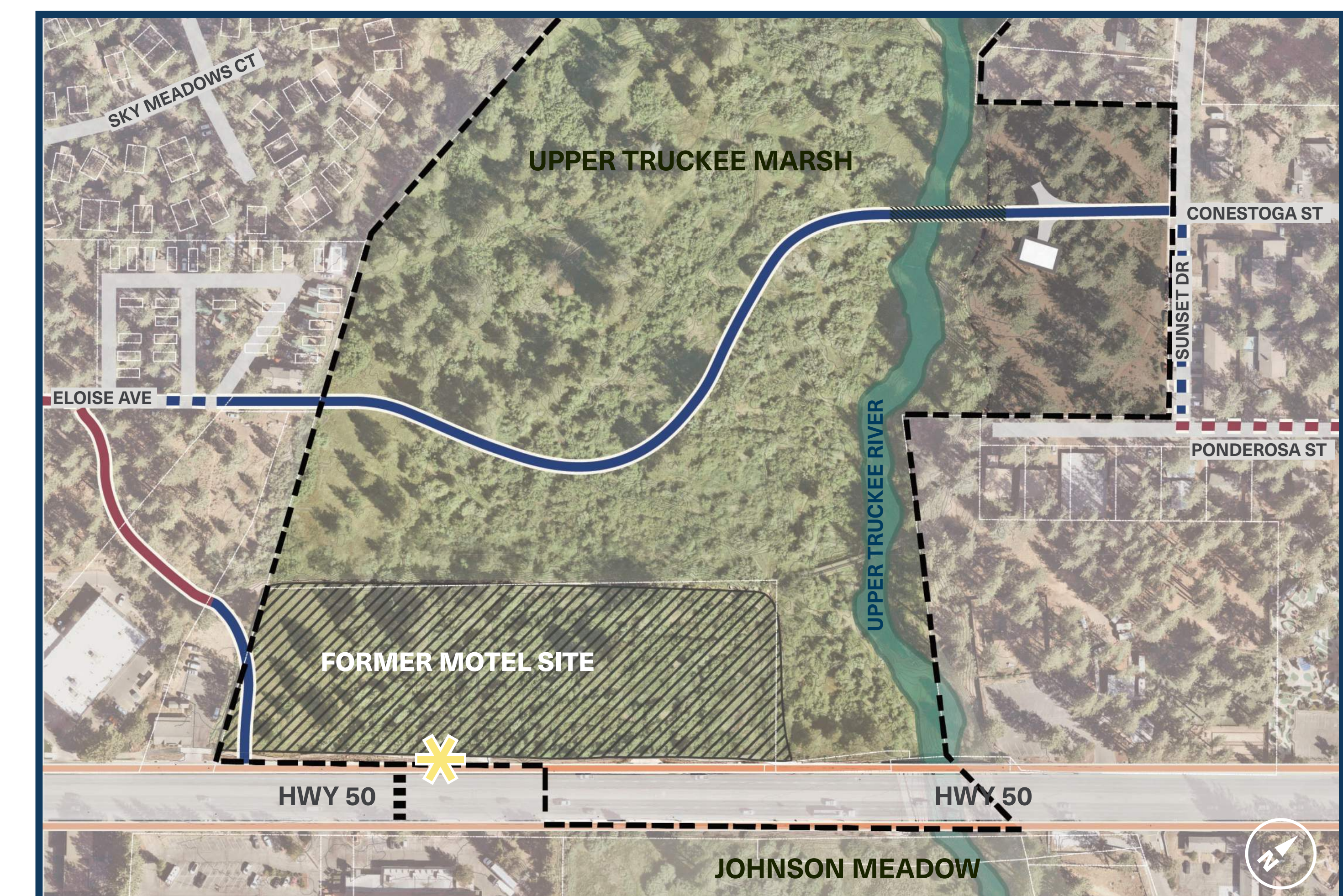
Bikeway extends from the end of Eloise Ave. to Ponderosa St. Connect to new crosswalk at HWY 50 via existing bikeway alignment.

CONCEPT 2 SIMILAR ALIGNMENT



Bikeway extends from Eloise Ave. to Ponderosa St. via route similar to current alignment.

CONCEPT 3 SCENIC ROUTE



Bikeway extends from the end of Eloise Ave. to Conestoga St. Connection to HWY 50 via existing bikeway alignment from trail.