

2 Restore the Marsh

RESTORATION ACTIONS

This board reviews some of the potential restoration actions. The Conservancy acquired this property primarily for restoration purposes. These funding conditions require that the Property be exclusively for the purposes of restoration and preservation of wetland and mountain meadow habitat.

Public access may be provided only when it is consistent with wildlife habitat preservation and protection of sensitive biological resources.

MEADOW RECLAMATION/ ENHANCEMENT

Remove placed fill and lower portions of floodplain and revegetate with native species and traditional Washoe plants. Willow is an important plant that the Washoe people use for basket making.

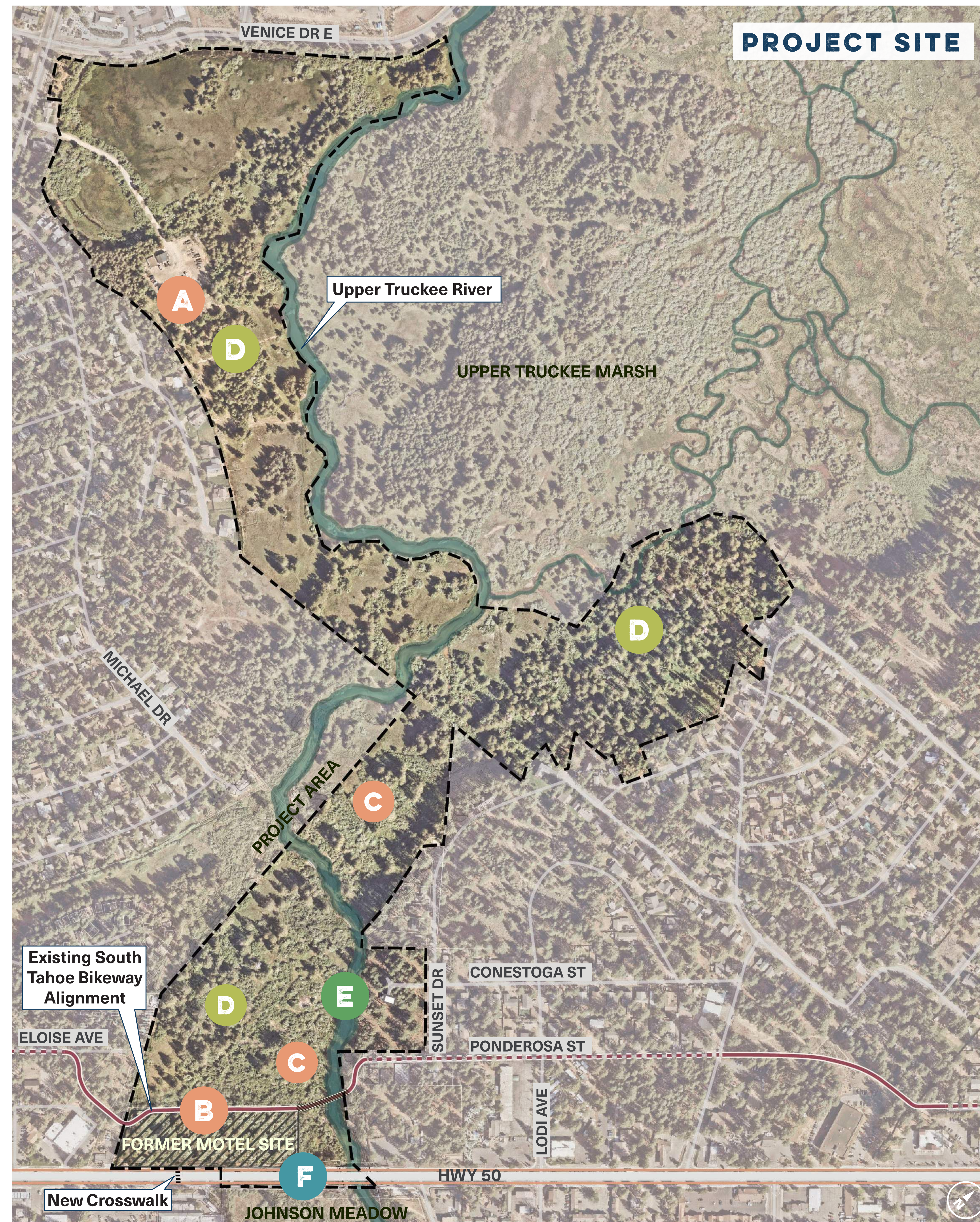
- A** FORMER MAINTENANCE YARD
- B** FORMER MOTEL SITE
- C** FLOODPLAIN LOWERING



Example of a Restored Meadow

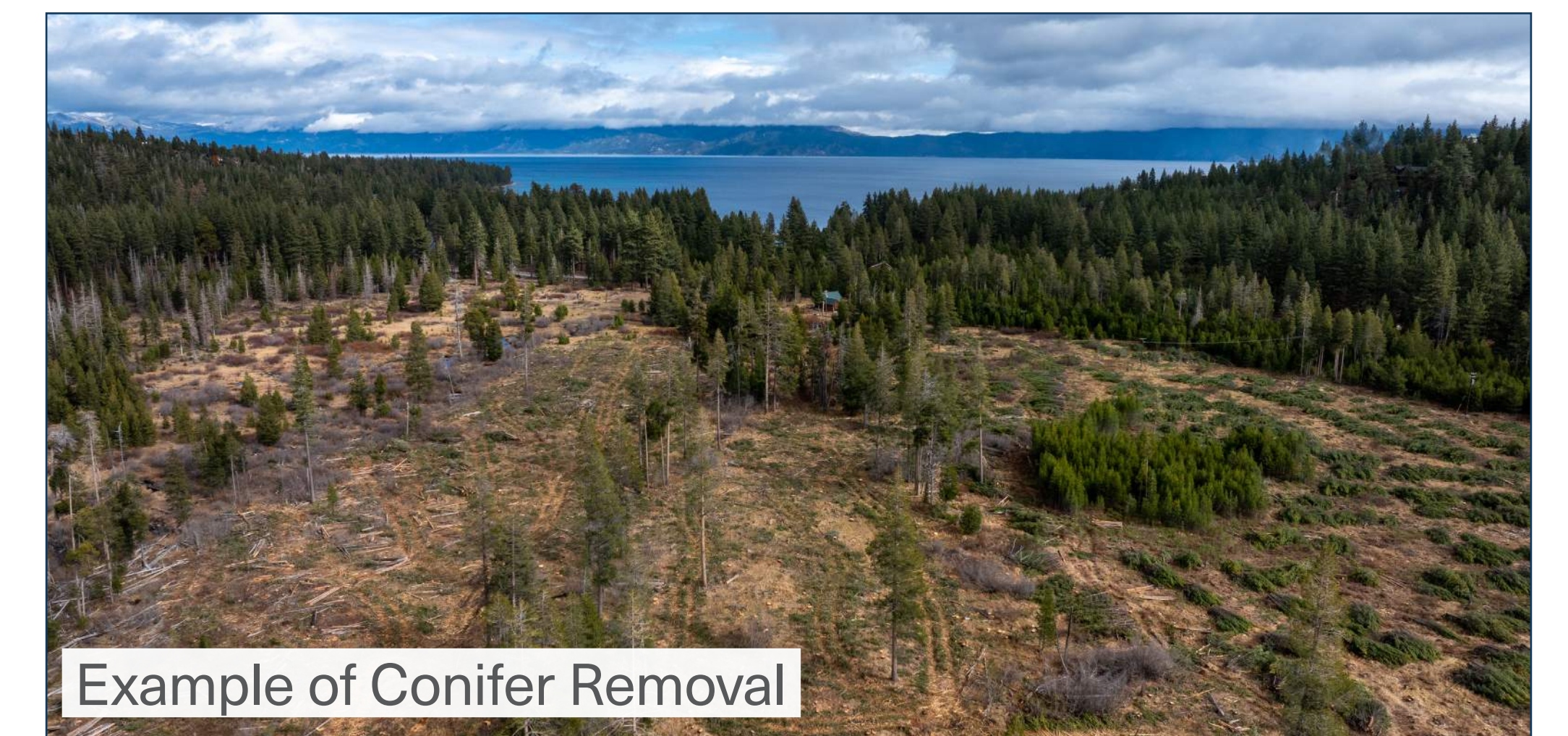


Example of Traditional Washoe Plant Species



VEGETATION MANAGEMENT

- D** Remove encroaching conifer trees and other vegetation to restore meadow.



Example of Conifer Removal

BANK STABILIZATION

- E** Stabilize the riverbank to prevent erosion and sediment pollution into the river while enhancing in channel habitat.



Example of Bank Stabilization

WATER AND WILDLIFE CONNECTIVITY

- F** Install new culverts to enhance water and wildlife connectivity.



Example of Wildlife and Culvert

Photo Credit: Pathways for Wildlife