

CALIFORNIA TAHOE CONSERVANCY

1061 Third Street
SOUTH LAKE TAHOE, CA 96150
(530) 542-5580



January 15, 2016

TO: Responsible and Trustee Agencies, County Clerk, Interested Parties, and Organizations

SUBJECT: California Environmental Quality Act
NOTICE OF INTENT TO ADOPT A SUPPLEMENT TO A MITIGATED NEGATIVE DECLARATION

Project Title: South Tahoe Greenway Shared-Use Trail (Greenway) Project Modifications
State Clearinghouse Number: 2006112070

NOTICE IS HEREBY GIVEN that the California Tahoe Conservancy, as lead agency for the project, has prepared a Supplement to the 2011 Initial Study/Mitigated Negative Declaration (Supplemental IS/MND) for the above-referenced project, which is available for public review.

Project Location: The proposed project modifications to the Greenway being evaluated are located in El Dorado County, primarily within the City of South Lake Tahoe limits between the Sierra Tract neighborhood and Glenwood Way.

Project Description: Originally approved in 2011, the Greenway establishes a 3.86-mile paved trail to provide the backbone of the bicycle trail network in the core of South Lake Tahoe, linking residential and lodging uses to jobs, schools, shopping, and recreation areas. Trail development details comply with the American Association of State Highway and Transportation Officials (AASHTO) guidelines and American Disability Act (ADA) design standards. The first phase of the project was constructed in 2015, between Herbert and Glenwood Way.

Project changes examined in the Supplemental IS/MND would modify one mile of the approved trail between Sierra Boulevard and Glenwood Way. They include revisions to the alignment for the Trout Creek crossing to reduce environmental impacts, design refinements in several areas that update project proposals, and needed easements. In addition, the Supplemental IS/MND considers a property exchange between the California Tahoe Conservancy, Lake Tahoe Community College, and the City of South Lake Tahoe to address overall management needs and facilitate project implementation.

The Supplemental IS/MND only addresses the environmental impacts of the section of trail proposed for realignment. Other sections of the 3.86-mile trail are unaffected by the proposed realignment and are therefore not revisited in the Supplemental IS/MND.

Environmental Topics Evaluated: The 2011 IS/MND evaluated all environmental topics associated with the South Tahoe Greenway Project. This supplement considers effects of proposed project modifications for Phases 1b & 2, and combined with the 2011 IS/MND, provides an assessment of potential for impacts on all elements of the environment.

Public Comment Period: The Supplemental IS/MND and the original 2011 IS/MND are available for public review from January 15 to February 16, 2016. Comments should be submitted or postmarked no later than 5:00 p.m. on Tuesday, February 16, 2016. Written comments may be sent by postal or electronic mail, or via fax to:

Sue Rae Irelan, Associate Environmental Planner
California Tahoe Conservancy
1061 Third Street
South Lake Tahoe, CA 96150
Phone: (530) 525-9137
Fax: (530) 542-5567
Email: SueRae.Irelan@tahoe.ca.gov

Comments received in response to this solicitation, including names and address of those who comment, will be part of the public record for this project.

Reviewing Locations: Copies of the Supplemental IS/MND and 2011 IS/MND are available for review at the following locations during business hours:

California Tahoe Conservancy
1061 Third Street
South Lake Tahoe, CA 96150
(530) 542-5580

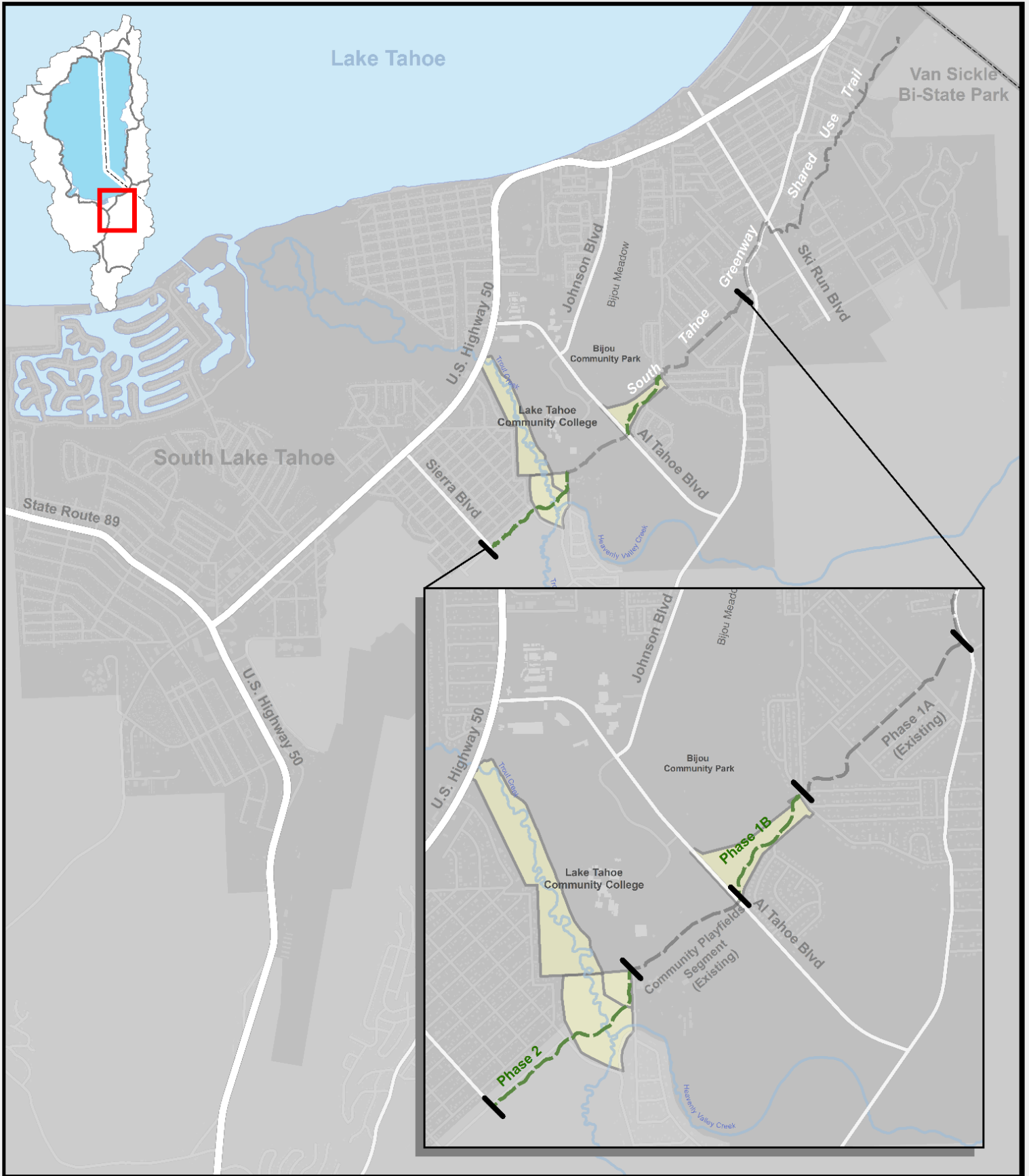
South Lake Tahoe Library
1000 Rufus Allen Blvd.
South Lake Tahoe, CA 96150
(530) 573-3185

City of South Lake Tahoe
Public Works Department
1052 Tata Lane
South Lake Tahoe, CA 96150
(530) 542-6030

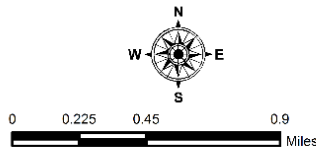
The Supplemental IS/MND and 2011 IS/MND can also be downloaded from the Conservancy's website:
http://tahoe.ca.gov/ctc_projects/south-tahoe-greenway-79/

Public Hearing: On Thursday, March 17, 2016, the Board of Directors of the California Tahoe Conservancy will conduct a public hearing to consider adoption of Supplemental IS/MND and take action on the proposed Greenway Project Modifications. The hearing will be held in South Lake Tahoe at 9:30 a.m. Refer to <http://tahoe.ca.gov/board-meetings-agendas/> for location information.

Figure 1 - South Tahoe Greenway Project Location



- Proposed Project Modifications
- Parcels Involved in Property Exchange



California Tahoe Conservancy
January 2016

Map for reference purposes only.
Sources: TRPA; CTC

