



# 2017 REPORT

— est. 1985 —

© Nick Spannagel

## CHAIRMAN'S MESSAGE



2017 marks yet another successful year for the Tahoe Conservancy. This year, we witnessed the completion of projects funded with the first round of Proposition 1 grants and awarded an additional \$3.3 million for the next batch of lake-saving projects. These projects, along with the work of our partners, are

transforming the Lake Tahoe Basin into a more sustainable place to live, visit, and enjoy.

I'm also excited for the opportunities the future holds. If approved, the pending State bonds would allow the Conservancy and its partners to boost the Basin's recreational opportunities for all Californians and continue restoring this treasured landscape.

Sincerely,

Larry Severson  
California Tahoe Conservancy Chair

## OUR MISSION

To lead California's efforts to restore and enhance the extraordinary natural and recreational resources of the Lake Tahoe Basin.



### 2017 BOARD OF DIRECTORS

LARRY SEVISON, Chair  
Placer County

ADAM ACOSTA  
Public Member

TODD FERRARA  
Resources Agency

KAREN FINN  
Department of Finance

BROOKE LAINE  
City of South Lake Tahoe

SUE NOVASEL  
El Dorado County

LYNN SUTER  
Public Member

JEFF MARSOLAIS  
U.S. Forest Service (Ex-Officio)

PATRICK WRIGHT,  
Executive Director



## 2017 HIGHLIGHTS

Partnered with the City of South Lake Tahoe and Placer County to complete **shared use trails** in South Lake Tahoe and Dollar Point which **added over three miles** to the Lake Tahoe Basin's non-motorized trail network.



*The El Dorado Beach to Ski Run Boulevard Bike Trail provides a safe connection between recreation, shopping, and community hubs in South Lake Tahoe.*

Funded a pilot project using ultra-violet light **to exterminate invasive plants in Lake Tahoe**. If successful, this technique could be a powerful tool to fight the spread of invasive plants.



Photo: Inventive Resources, Inc.

*Ultra-violet lights attached to the bottom of this boat are used to kill invasive plants at Lakeside Marina in South Lake Tahoe.*

Entered into a \$4.2 million agreement with the U.S. Army Corps of Engineers to **restore over 500 acres of wetland** at the Upper Truckee Marsh.



*The Upper Truckee Marsh Project will restore the largest remaining wetland in the Sierra Nevada.*

Partnered with El Dorado County to complete a \$1.1 million **multi-benefit stream zone** restoration project in Meyers to improve water quality entering Lake Tahoe.



Photo: El Dorado County

*This infiltration basin will clean storm water by allowing it to filter into the ground before heading to Lake Tahoe.*

**COMPLETED** 23 restoration projects on Conservancy land throughout the Lake Tahoe Basin. These projects enhance trails, improve lake clarity by reducing erosion, and protect sensitive ecosystems.



*Stream channel enhancement projects improve lake clarity by reducing sediment caused by eroding stream banks.*

# CONSERVANCY TACKLES MAJOR THREATS TO CENTRAL SIERRA'S FOREST LANDSCAPES

Persistent drought, climate change, and overstocked forests leave the Sierra Nevada susceptible to catastrophic wildfire, diminished recreational opportunities, and unhealthy ecosystems. The Conservancy and its partners are stepping up to address these challenges like never before by planning several large scale initiatives designed to mitigate climate change, improve forest health, and restore ecosystem resiliency while increasing the pace and scale of restoration.

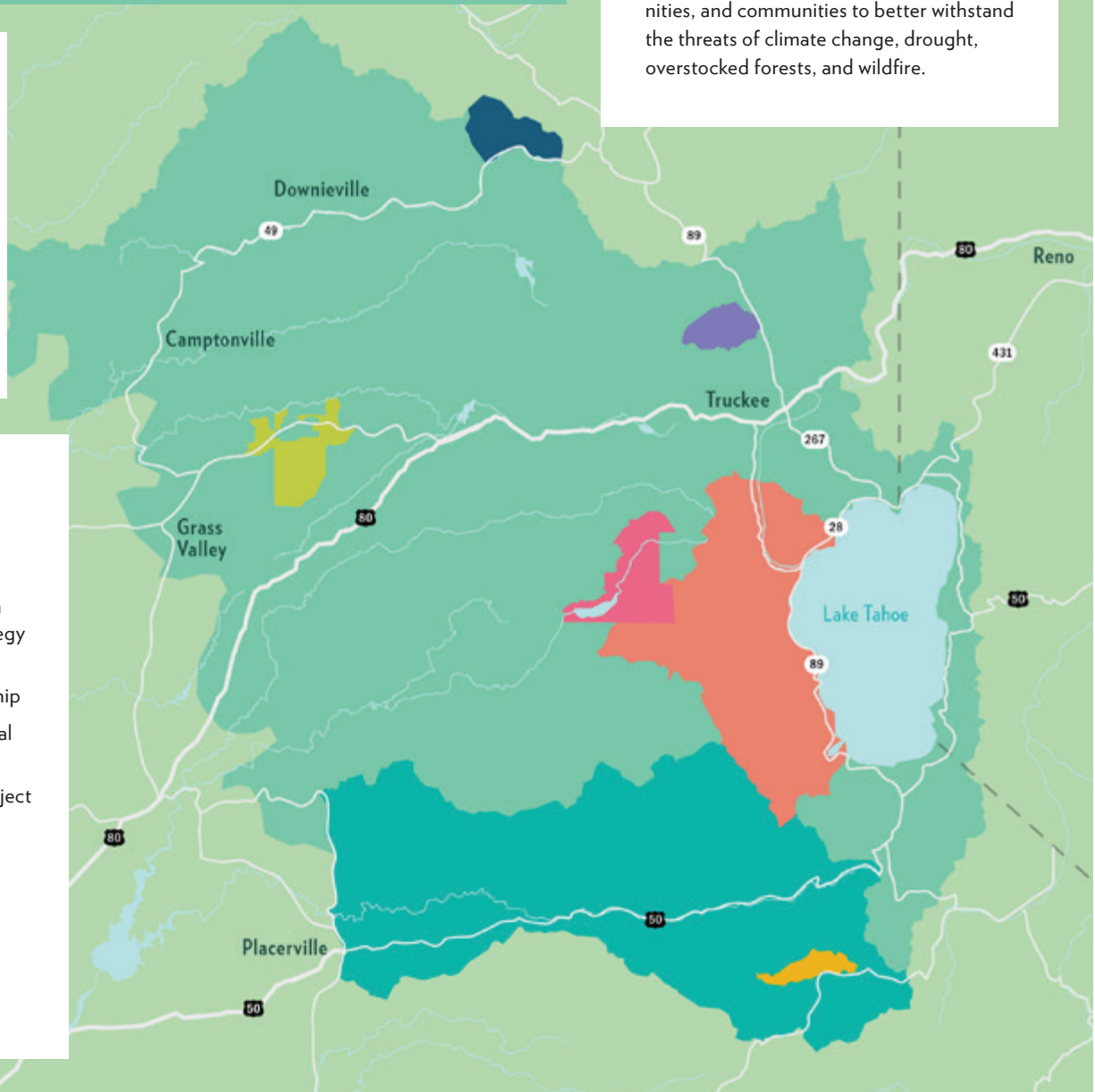
**TAHOE-CENTRAL SIERRA INITIATIVE** builds upon several large-scale regional efforts to accelerate large landscape forest health projects and development of biomass utilization infrastructure throughout a 2.4 million acre swath of the central Sierra. Lake Tahoe West is a component of this effort.

**LAKE TAHOE WEST** Restoration Partnership is a 60,000 acre collaborative landscape level planning effort aimed at restoring the resilience of the west shore's forests, watersheds, recreational opportunities, and communities to better withstand the threats of climate change, drought, overstocked forests, and wildfire.

The Conservancy authorized over **\$414,000** in federal funds to **reduce catastrophic wildfire risk** on State Park land on the north and west shores of Lake Tahoe.

## PROJECTS

- Caples Ecological Restoration Project
- South Fork American River Cohesive Strategy
- Lake Tahoe West Restoration Partnership
- Sagehen Experimental Forest Project
- French Meadows Project
- North Yuba Forest Resilience Project
- Western Nevada County Defensible Space Project
- Tahoe Central Sierra Initiative



The Tahoe-Central Sierra Initiative brings together federal, state, academic, and nonprofit partners.

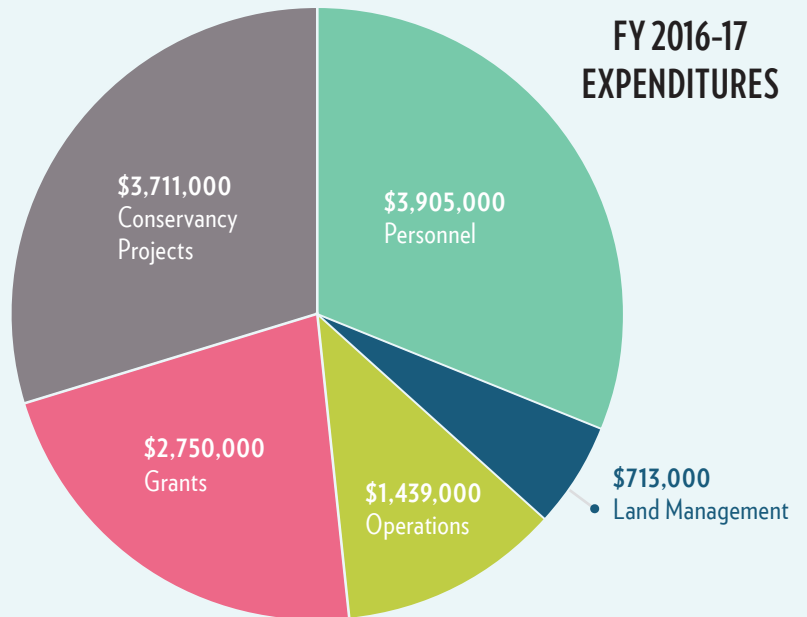




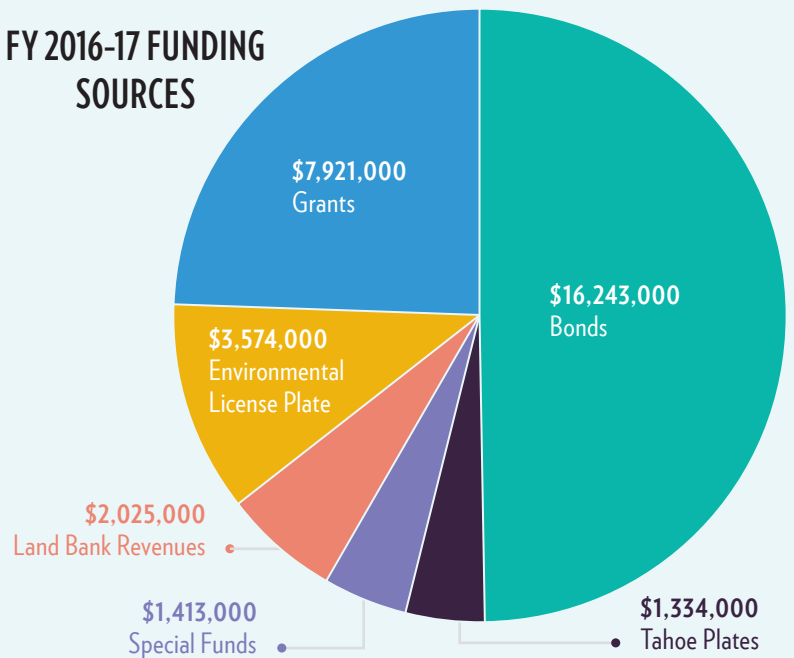
## 2017 PROPOSITION 1 ROUND 2 FUNDING AWARDS

<b>Collaborative AIS Program Planning</b> <i>Tahoe Resource Conservation District (Tahoe RCD)</i>	<b>\$862,000</b>
<b>Bijou Park Creek Restoration Priority Acquisitions</b> <i>City of South Lake Tahoe</i>	<b>\$572,250</b>
<b>Lake Tahoe West Restoration Partnership</b> <i>National Forest Foundation</i>	<b>\$398,750</b>
<b>Control of the Invasive Mysis Shrimp to Recover Lake Clarity and Ecosystem Health</b> <i>University of California, Davis</i>	<b>\$390,081</b>
<b>Tahoe City Caltrans Maintenance Yard Relocation and Restoration Project</b> <i>Tahoe Transportation District</i>	<b>\$354,000</b>
<b>Polaris Creek &amp; Wetland Restoration Feasibility Study</b> <i>Tahoe RCD</i>	<b>\$282,000</b>
<b>Country Club Heights Erosion Control Project Implementation</b> <i>El Dorado County</i>	<b>\$250,000</b>
<b>Country Club Heights Erosion Control Project Phase 3</b> <i>El Dorado County</i>	<b>\$250,000</b>
<b>TOTAL</b>	<b>\$3,359,081</b>

## FY 2016-17 EXPENDITURES



## FY 2016-17 FUNDING SOURCES



## MANAGING STATE LANDS

### 2017 ACCOMPLISHMENTS

<b>ENHANCED</b> 2.1 acres of stream environment zone	<b>INSPECTED</b> 2,465 properties
<b>RESOLVED</b> 7 trespass & encroachments	<b>ADDRESSED</b> 258 citizen reports
<b>IMPLEMENTED</b> 111 maintenance projects	<b>REMOVED</b> 162 hazard trees



photo: Mike Vollmer

Tahoe Conservation Partnership crews maintain, inspect, restore, and improve the Conservancy's 4,700 parcels on the California side of the Basin.

## CALIFORNIA TAHOE CONSERVANCY

1061 Third Street // South Lake Tahoe, CA 96150 // 530.542.5580 // [info@tahoe.ca.gov](mailto:info@tahoe.ca.gov) // [www.tahoe.ca.gov](http://www.tahoe.ca.gov)