

**South Tahoe Greenway Shared Use Trail Project Modification
Initial Study/Mitigated Negative Declaration Supplement**

**Appendix A
Preliminary Plans**

SOUTH TAHOE GREENWAY

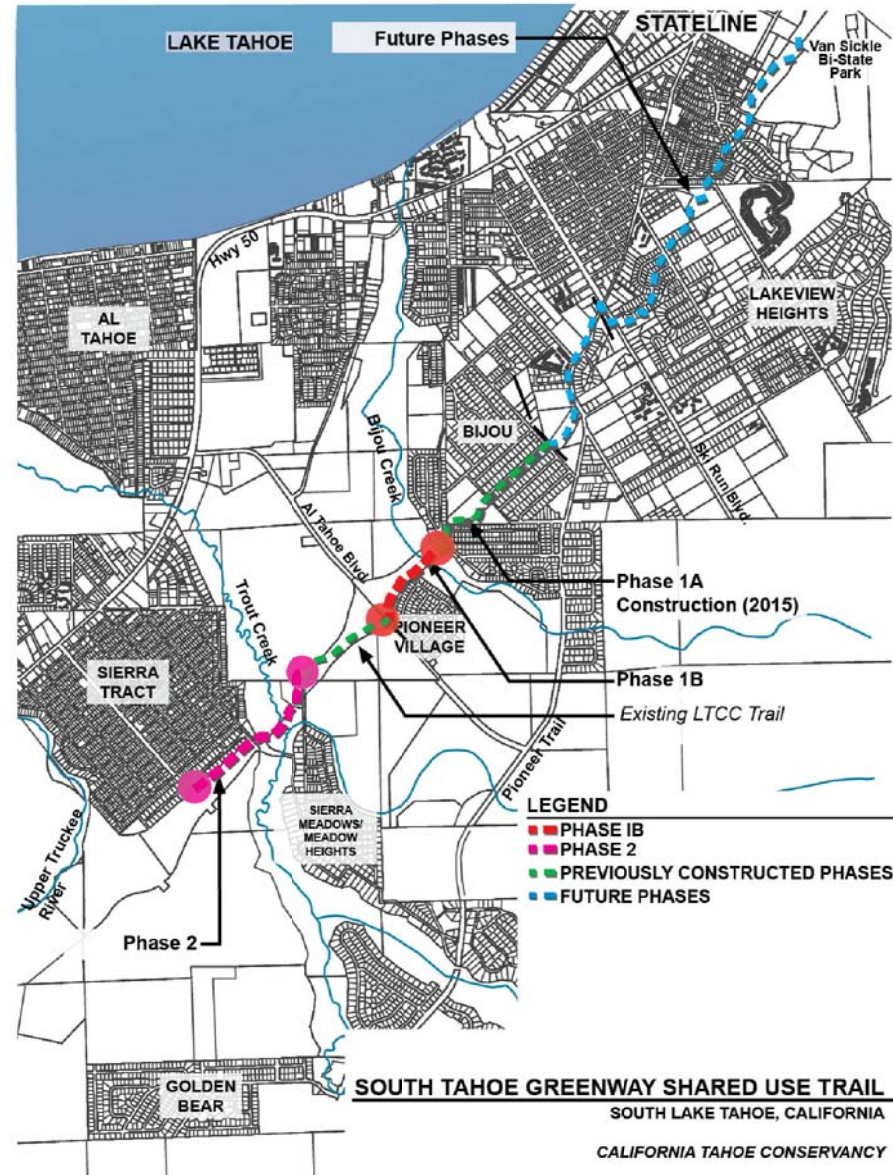
SOUTH LAKE TAHOE, CA PRELIMINARY DESIGN

PHASES 1B and 2 PLANS WITH MITIGATION

MEASURES INCORPORATED

NOT FOR CONSTRUCTION

JANUARY 2016



Sheet Index

Site Drawings:

SHEET TITLE	SHEET NO.
PROJECT AREA AND TRAIL CONTEXT PLAN	L1.01 - L1.03
PRELIMINARY GRADING AND MATERIALS	L2.01 - L2.09
TRAIL DETAILS	L3.01 - L3.04

DRAWING NOTES

1. Contour intervals are at 1'
2. Project Area Boundary may extend outside of Drawing Sheet on "L2" Sheet Series. Refer to "L1" Sheet Series to view Project Area Boundary location.
3. Trail grading or alignment may be relocated or trail modified to keep existing utilities, storm drainage features and power poles.
4. User management fences may be provided at all entries and exits of boardwalks to direct users to stay on alignment.
5. Grades are noted along the trail alignment. Grades are listed in 1% increments.
6. Cut and fill slopes are graded at 3:1.
7. Drainage approach is described in a separate drainage report and not illustrated or noted on the plan sheets. The basic strategy for drainage is sheet flow and infiltration.
8. Trail restoration and disturbance restoration approaches are described in a separate restoration report.
9. Trails to be decommissioned and restored and receive Best Management Practices (BMPs) are shown on the "L1" Sheet Series. Restoration details and strategies are described in a separate report.
10. An ornamental landscape plan and irrigation is not anticipated. Revegetation strategies include native plant species as described in the Restoration Report. Restoration strategies for screening or user management purposes are described in the report.
11. Disturbance information is shown on the "L1" Sheet Series.
12. Wall widths may vary due to allowances made for layback of concrete block walls and/or rock walls.
13. No lighting is planned along the trail.
14. Boardwalks are used to minimize disturbance to existing grade and vegetation. The following strategy is applied for use of boardwalks.
 - Boardwalk is used in SEZ areas that show signs of surface flow or thick meadow grass.
 - Trails directly adjacent to roadways in SEZ areas do not use either the boardwalk or permeable fill applications as they may not be as functional in such an application.
 - Transition of materials is made between the SEZ boundary designation and the setback.
 - Boardwalks 30" above grade or less use a curb rail and not full railing system. Boardwalks greater than 30" above grade use a railing.
 - Boardwalks with railings are 12' in width to accommodate movement of bike handle bars away from railings and maintain a useable space of 10'.
 - Boardwalks north of Sierra Tract are 12' in width to accommodate for movement away from boardwalk edge and to account for a potentially higher volume of use.
15. Raised asphalt trails on permeable fill are used in SEZ areas that do not show signs of surface flow.
16. Land capability information is compiled from the following sources:
 - Areas of Phase 2 which have TRPA verified classifications will use those classifications.
15. Specific trees to be removed are not shown on the plans. A summary of the number, species, and size of trees removed are shown on the "L1" Sheet Series. Counts are summarized per Phase.
16. All railings, sign backs and other above grade structures to be earth tone color.
17. Boardwalks and bridge are designed per current FEMA mapping. Freeboard is located above base flood elevation. Final design to refine boardwalk and bridge elevations based on floodplain modeling. Bridge elevation to be high enough to allow typical storm driven debris to flow under.

Trail construction will be aimed at "field-fitting" trail to maneuver around trees and use boulders to minimize tree removal and large grading requirements.

MATERIALS SYMBOL LEGEND

	Asphalt Trail on Grade - 10' Wide		Pine Needle Duff Clear Zone
	Raised Asphalt Trail on Permeable Fill - 10' Wide		Riparian Wetland
	Boardwalk Trail No Rail - 12' Wide		Emergent Floodplain Wetland
	Boardwalk Trail with Rail - 12' Wide		Montane Dry Meadow Wetland
	Bridge		

LINework LEGEND

	Land Capability Boundary
	SEZ Setback
	Project Area Boundary (Where project area boundary coincides with land capability boundary or parcel lines, project boundary linework may be most visible)
	Contours - at 1' Interval (every fifth is represented by heavier linework)
	Tree Cover Outlines
	Parcel Lines
	100 Year Floodplain
	Floodway
	Limit of Cut/Fill (Daylight)

*Note: Linetypes shown are for preliminary reference only. Additional linework on plans may have similar lineweights and styles.

ACRONYM LEGEND

AC	Asphalt Concrete	OD	Outside Diameter
BW	Bottom of Wall	OPP	Opposite
CL	Center Line	PAR	Parallel
CONC	Concrete	PL	Property Line
DBH	Diameter at Breast Height	ROW	Right of Way
DETL	Detail	SD	Storm Drain
EXIST	Existing	SDMH	Storm Drain Man Hole
FES	Flared End Section	SF	Square Foot (feet)
FG	Finished Grade	SHT	Sheet
FL	Flowline	STA	Station Point
GB	Grade Break	TW	Top of Wall
H	Height	VERT	Vertical
LF	Linear Foot (feet)	VOL	Volume
MIN	Minimum	W	With
OC	On Center		

SITE DETAIL KEYNOTES: DETAIL/SHEET

1.0	PAVING AND BOARDWALKS	
1.1	10' Asphalt Trail On Grade	L3.01
1.2	Decking Layout	L3.01
1.3	12' Boardwalk With Rail	L3.01
1.4	12' Boardwalk No Rail	L3.01
1.5	Raised Asphalt Trail On Permeable Fill	L3.01
1.6	Helical Beam Bracket Extension	L3.02
1.7	Boardwalk End Jolt Connection	L3.02
1.8	Trout Creek Bridge	L3.02
2.0	BIKE CROSSINGS	
2.1	Primary Road Crossing at Intersection - With Pedestrian Activated Warning System Light	L3.03
3.0	SECTION NOT USED	
4.0	RAILINGS AND BARRIERS	
4.1	Boardwalk Railing	L3.03
4.2	Boardwalk Curb	L3.03
4.3	Boardwalk Curb Detail	L3.03
4.4	Post-Rail Elevation Detail	L3.03
4.5	Post-Rail Section Detail	L3.03
4.6	Split Rail Fence	L3.04
5.0	SECTION NOT USED	
6.0	PLANTING AND REVEGETATION	
6.1	Decommissioned Trail Restoration	L3.04
6.2	Trail Corraling	L3.04
6.3	Shrub Planting	L3.04

CALIFORNIA TAHOE CONSERVANCY
Sue Rae Irelan
1061 Third Street
South Lake Tahoe, CA 96150
Tel: (530) 525-9137
Facsimile: (530) 525-1646
sirelan@tahoe.ca.gov

LANDSCAPE ARCHITECT: DESIGNWORKSHOP - TAHOE
Stephanie Grigsby
128 Market Street, Suite 3
Stateline, NV 89449
P.O. Box 5666
Tel: (775) 588-5929
sgrigsby@designworkshop.com

CIVIL ENGINEER: Lumos Engineers
Brlan McRae
225 Kingsbury Grade
Stateline, NV 89449
Tel: (775) 588-6490
Facsimile: (775) 588-6479
bmcr@lumosinc.com



**SOUTH TAHOE GREENWAY
PHASE 1B AND 2
CALIFORNIA TAHOE CONSERVANCY
SOUTH LAKE TAHOE, CALIFORNIA**

ISSUE DATE: January 2016

REVISIONS

NO.	DATE	DESCRIPTION

DRAWN: SG/BM REVIEWED: SG/BM

**Preliminary
Design Project
Submittal**

PROJECT NUMBER: 5416

**Project Area
and Trail Context
Plan**

SHEET NUMBER

L1.01

LEGEND

- Project Area Boundary
- Land Capability Boundary
- Contours - at 5' Interval
- Parcel Lines
- 100 Year Floodplain
- Floodway
- Sheet Layouts
- Greenway Shared Use Path
 - Path alignment
 - New walls and headwalls
 - Clear zone
- Existing Trails to Remain
- Greenway Aligned Over Existing Disturbance in SEZ
- Existing Trails to be Restored

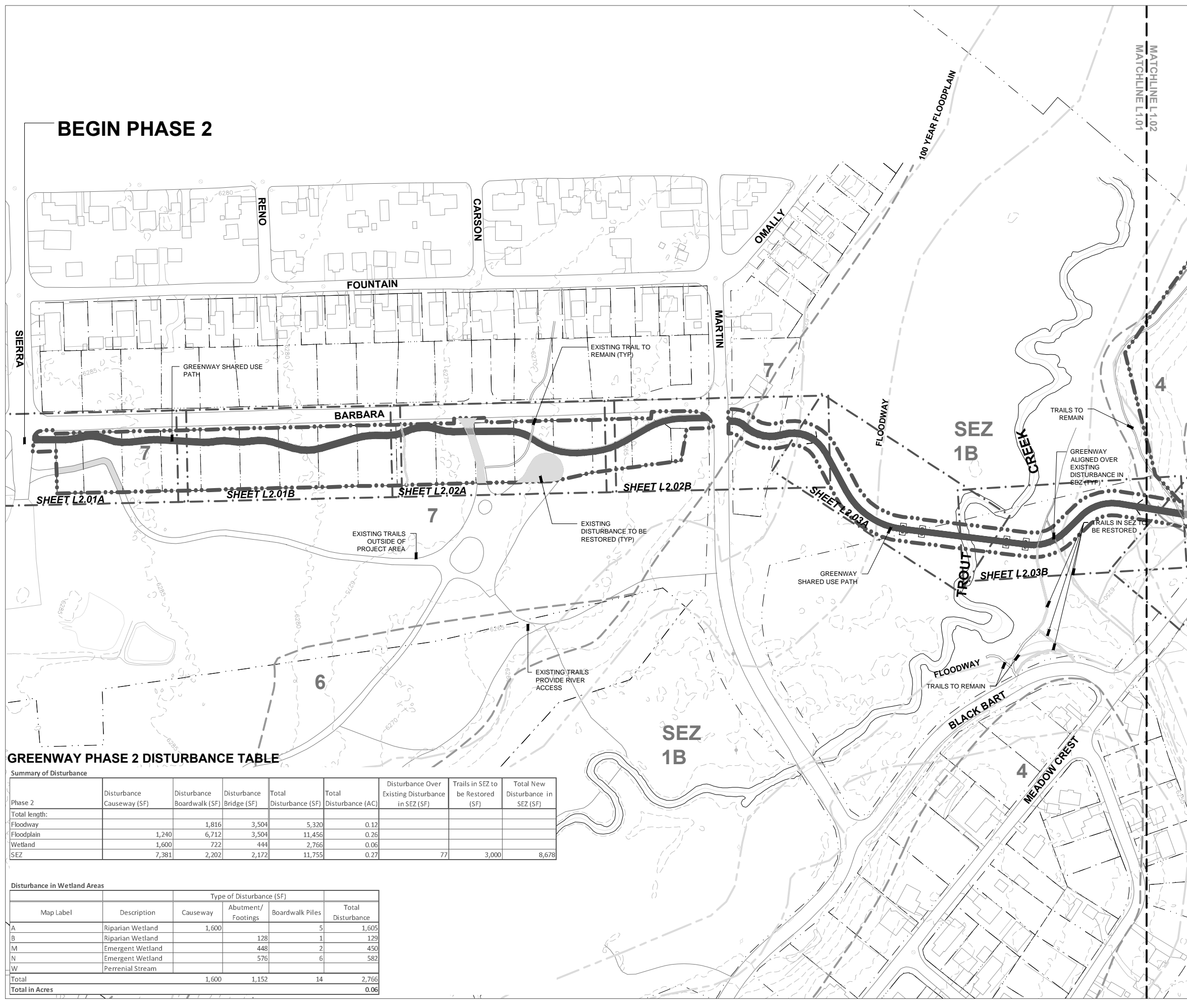
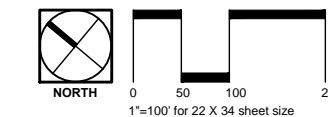
NOTE:

- DISTURBANCE CALCULATIONS WITHIN SEZ, FLOODWAY, FLOODPLAIN AND WETLAND SHOWN PER PHASE
- TREE REMOVAL ESTIMATES SHOWN PER PHASE

**ESTIMATED TREE REMOVAL
PHASE 2**

Tree Species	Quantity	DBH
Jeffrey Pine & Lodgepole Pine	31	6"-13"
Jeffrey Pine & Lodgepole Pine	25	14"-23"
Jeffrey Pine & Lodgepole Pine	14	Over 24"
Total	70	

*Note: Boulder placements and slight trail modifications will be used where possible to field fit trail to avoid trees greater than 30" and minimize disturbance in low capability lands.



BEGIN PHASE 2

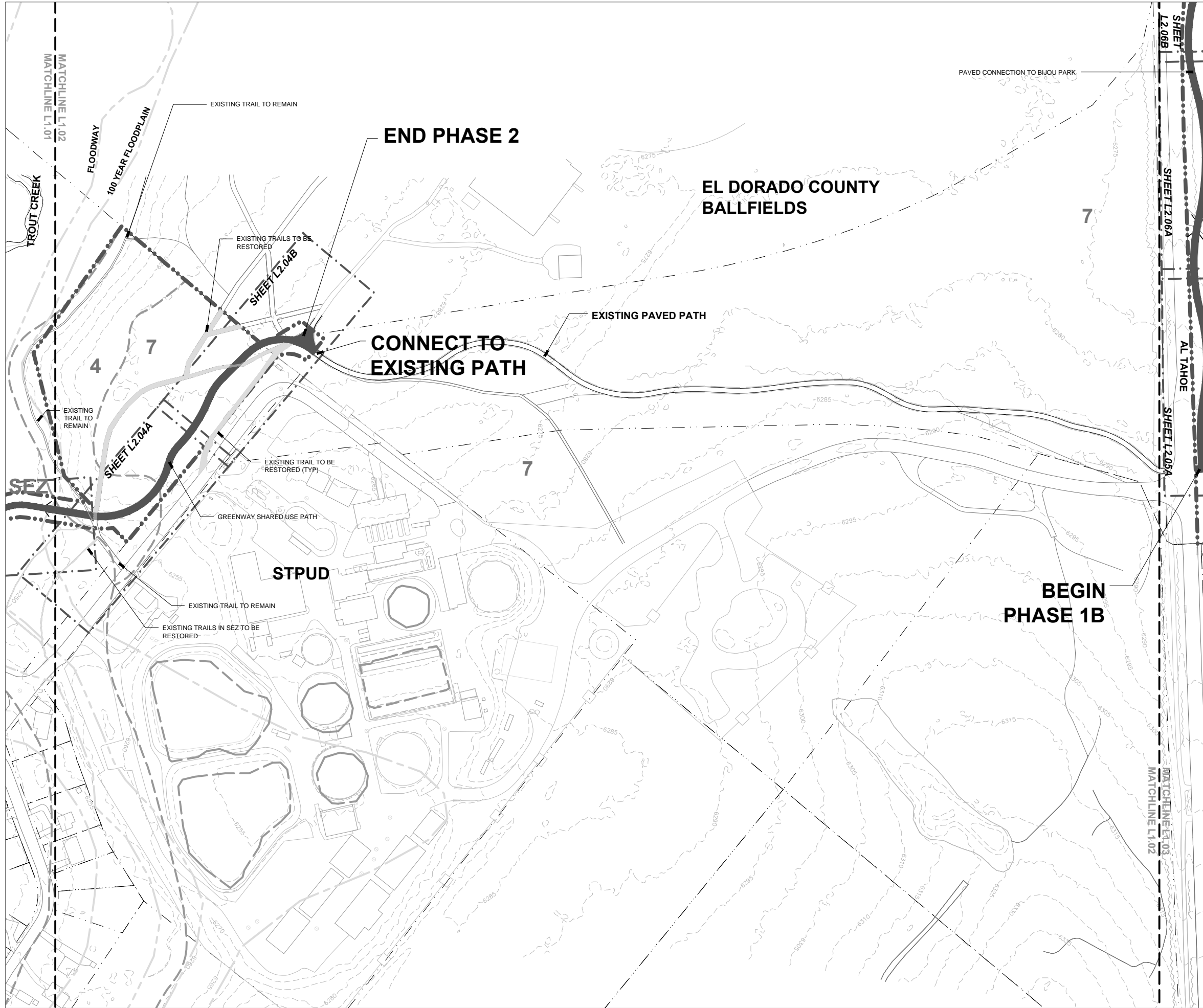
GREENWAY PHASE 2 DISTURBANCE TABLE

Summary of Disturbance

Phase 2	Disturbance Causeway (SF)	Disturbance Boardwalk (SF)	Disturbance Bridge (SF)	Total Disturbance (SF)	Total Disturbance (AC)	Disturbance Over Existing Disturbance in SEZ (SF)	Trails in SEZ to be Restored (SF)	Total New Disturbance in SEZ (SF)
Total length:								
Floodway		1,816	3,504	5,320	0.12			
Floodplain	1,240	6,712	3,504	11,456	0.26			
Wetland	1,600	722	444	2,766	0.06			
SEZ	7,381	2,202	2,172	11,755	0.27	77	3,000	8,678

Disturbance in Wetland Areas

Map Label	Description	Type of Disturbance (SF)			Total Disturbance
		Causeway	Abutment/ Footings	Boardwalk Piles	
A	Riparian Wetland	1,600		5	1,605
B	Riparian Wetland		128	1	129
M	Emergent Wetland		448	2	450
N	Emergent Wetland		576	6	582
W	Perennial Stream				
Total		1,600	1,152	14	2,766
Total in Acres					0.06



LEGEND

- Project Area Boundary
- Land Capability Boundary
- Contours - at 5' Interval
- Parcel Lines
- 100 Year Floodplain
- Floodway
- Sheet Layouts
- Greenway Shared Use Path
 - Path alignment
 - New walls and headwalls
 - Clear zone
- Existing Trails to Remain
- Greenway Aligned Over Existing Disturbance in SEZ
- Existing Trails to be Restored

NOTE:

- DISTURBANCE CALCULATIONS SHOWN ON SHEET L1.01
- TREE REMOVAL ESTIMATES SHOWN ON SHEET L1.01

DESIGNWORKSHOP

Landscape Architecture • Land Planning
Urban Design • Tourism Planning

Asheville • Aspen • Austin • Denver
Salt Lake City • Phoenix • Lake Tahoe

P.O. Box 5666
128 Market Street, Suite 3E
Stateline, Nevada 89449-5666
(775) 588-5929
Facsimile (775) 588-1559

WWW.DESIGNWORKSHOP.COM



225 KINGSBURY GRADE, SUITE A
STATELINE, NV 89449
PH.: (775) 588-6490
FAX: (775) 588-6479

**SOUTH TAHOE GREENWAY
PHASE 1B AND 2
CALIFORNIA TAHOE CONSERVANCY
SOUTH LAKE TAHOE, CALIFORNIA**

ISSUE DATE: January 2016

REVISIONS

NO.	DESCRIPTION

DRAWN: SG/BM REVIEWED: SG/BM

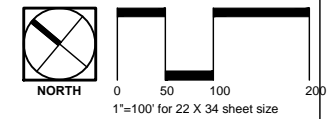
**Preliminary
Design Project
Submittal**

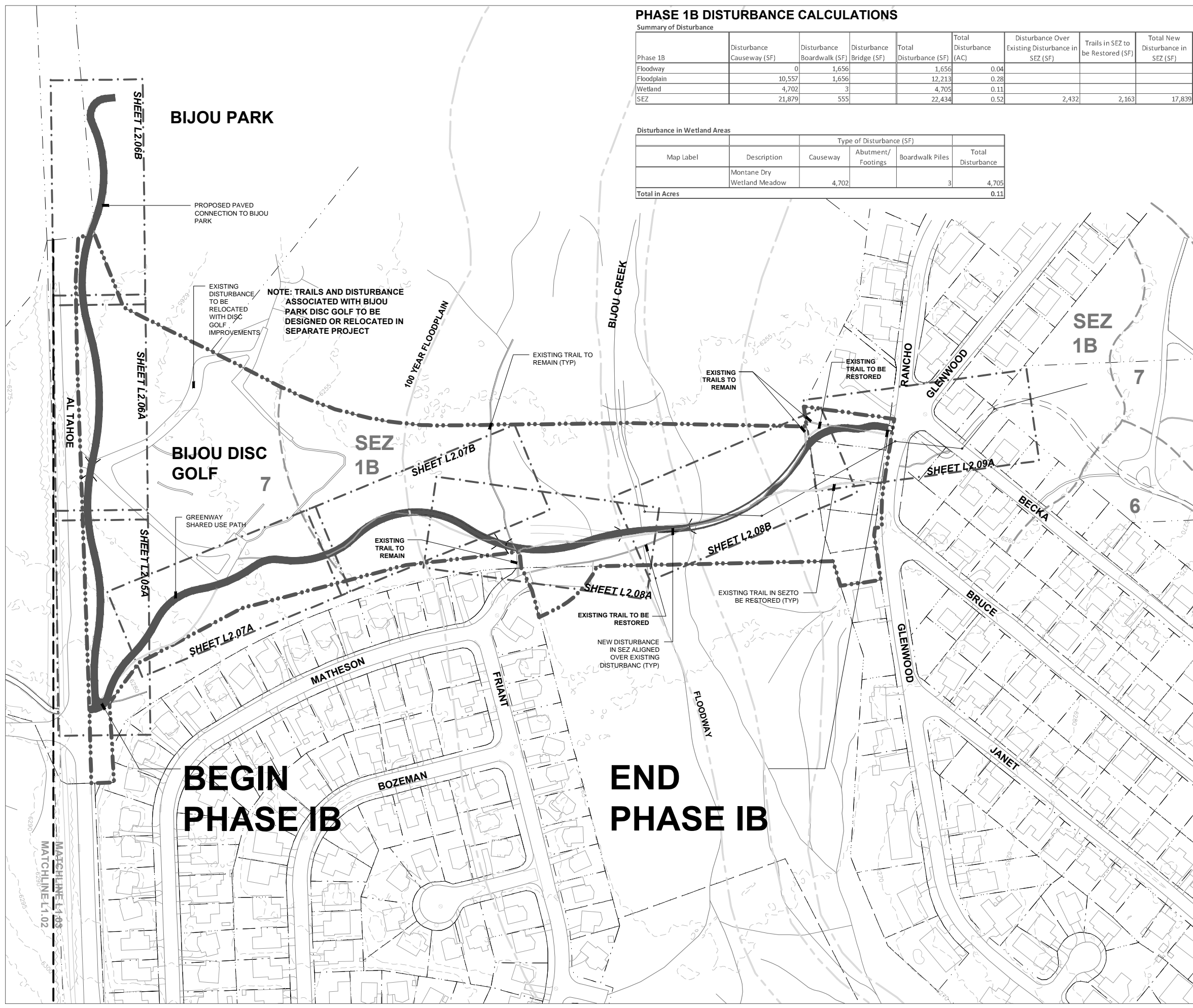
PROJECT NUMBER: 5416

**Project Area
and Trail Context
Plan**

SHEET NUMBER

L1.02





PHASE 1B DISTURBANCE CALCULATIONS

Summary of Disturbance

Phase 1B	Disturbance Causeway (SF)	Disturbance Boardwalk (SF)	Disturbance Bridge (SF)	Total Disturbance (SF)	Total Disturbance (AC)	Disturbance Over Existing Disturbance in SEZ (SF)	Trails in SEZ to be Restored (SF)	Total New Disturbance in SEZ (SF)
Floodway	0	1,656		1,656	0.04			
Floodplain	10,557	1,656		12,213	0.28			
Wetland	4,702	3		4,705	0.11			
SEZ	21,879	555		22,434	0.52	2,432	2,163	17,839

Disturbance in Wetland Areas

Map Label	Description	Type of Disturbance (SF)			Total Disturbance
		Causeway	Abutment/ Footings	Boardwalk Piles	
	Montane Dry Wetland Meadow	4,702		3	4,705
Total in Acres					0.11

LEGEND

- Project Area Boundary
- Land Capability Boundary
- Contours - at 5' Interval
- Parcel Lines
- 100 Year Floodplain
- Floodway
- Sheet Layouts
- Greenway Shared Use Path
 - Path alignment
 - New walls and headwalls
 - Clear zone
- Existing Trails to Remain
- Greenway Aligned Over Existing Disturbance in SEZ
- Existing Trails to be Restored

NOTE::

- DISTURBANCE CALCULATIONS WITHIN SEZ, FLOODWAY, FLOODPLAIN AND WETLAND SHOWN PER PHASE
- TREE REMOVAL ESTIMATES SHOWN PER PHASE

ESTIMATED TREE REMOVAL PHASE 1B

	Quantity	DBH
Jeffrey Pine & Lodgepole Pine	48	6"-13"
Jeffrey Pine & Lodgepole Pine	15	14"-23"
Jeffrey Pine & Lodgepole Pine	4	Over 24"
Total	67	

*Note: Boulder placements and slight trail modifications will be used where possible to field fit trail to avoid trees greater than 30" and minimize disturbance in low capability lands.



0 50 100 200
1"=100' for 22 X 34 sheet size

DESIGNWORKSHOP

Landscape Architecture • Land Planning
Urban Design • Tourism Planning

Asheville • Aspen • Austin • Denver
Salt Lake City • Phoenix • Lake Tahoe

P.O. Box 5666
128 Market Street, Suite 3E
Stateline, Nevada 89449-5666
(775) 588-5929
Facsimile (775) 588-1559

WWW.DESIGNWORKSHOP.COM



225 KINGSBURY GRADE, SUITE A
STATELINE, NV 89449
PH.: (775) 588-6490
FAX: (775) 588-6479

**SOUTH TAHOE GREENWAY
PHASE 1B AND 2
CALIFORNIA TAHOE CONSERVANCY
SOUTH LAKE TAHOE, CALIFORNIA**

ISSUE DATE: January 2016

REVISIONS

NO.	DESCRIPTION	DATE

DRAWN: SG/BM REVIEWED: SG/BM

Preliminary Design Project Submittal

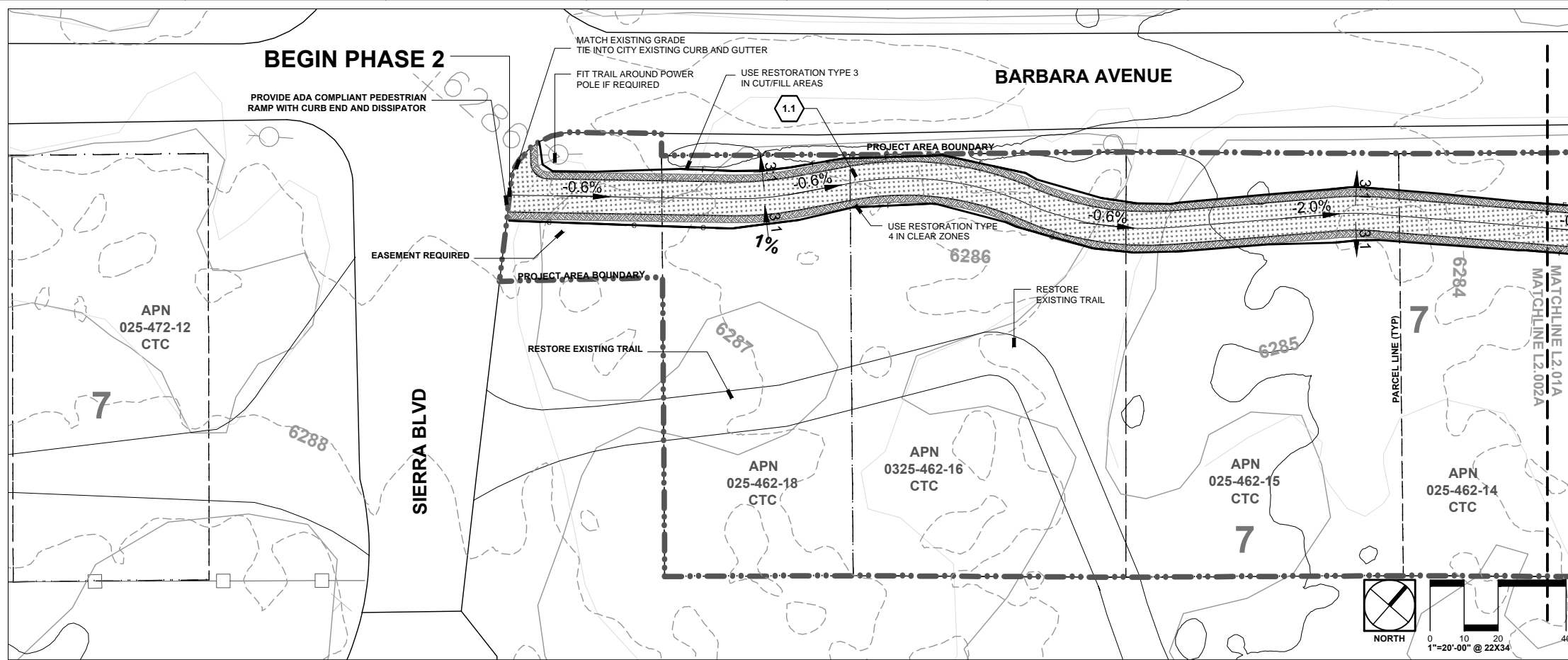
PROJECT NUMBER: 5416

Project Area and Trail Context Plan

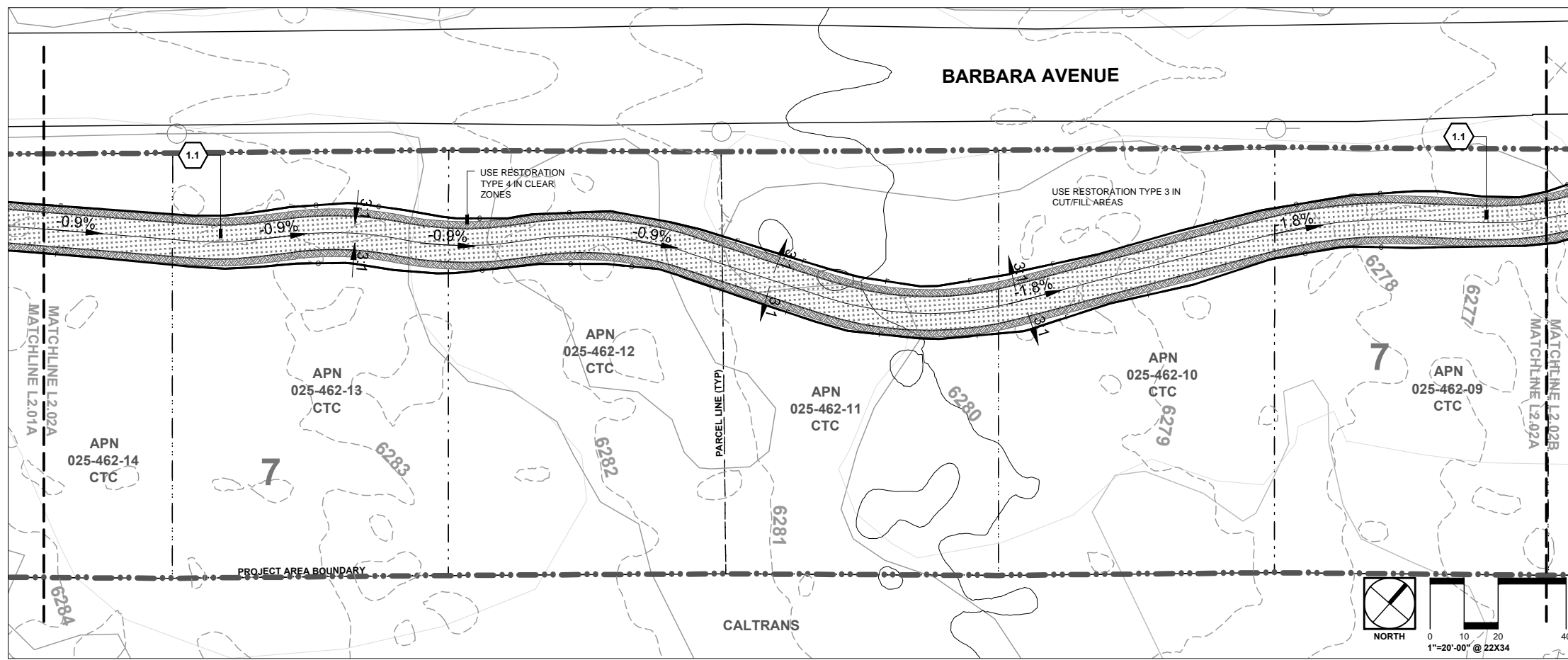
SHEET NUMBER

L1.03

©COPYRIGHT DESIGNWORKSHOP, INC.



A Map Inset A



B Map Inset A

SITE DETAIL KEYNOTES:

	DETAIL/SHEET
1.0 PAVING AND BOARDWALKS	
1.1 10' Asphalt Trail On Grade	L3.01
1.2 Decking Layout	L3.01
1.3 12' Boardwalk With Rail	L3.01
1.4 12' Boardwalk No Rail	L3.01
1.5 Raised Asphalt Trail On Permeable Fill	L3.01
1.6 Helical Beam Bracket Extension	L3.02
1.7 Boardwalk End Joist Connection	L3.02
1.8 Trout Creek Bridge	L3.02
2.0 BIKE CROSSINGS	
2.1 Primary Road Crossing at Intersection - With Pedestrian Activated Warning System Light	L3.03
3.0 SECTION NOT USED	
4.0 RAILINGS AND BARRIERS	
4.1 Boardwalk Railing	L3.03
4.2 Boardwalk Curb	L3.03
4.3 Boardwalk Curb Detail	L3.03
4.4 Post-Rail Elevation Detail	L3.03
4.5 Post-Rail Section Detail	L3.03
4.6 Split Rail Fence	L3.04
5.0 SECTION NOT USED	
6.0 PLANTING AND REVEGETATION	
6.1 Decommissioned Trail Restoration	L3.04
6.2 Trail Corraling	L3.04
6.3 Shrub Planting	L3.04

MATERIALS SYMBOL LEGEND

Asphalt Trail on Grade - 10' Wide	Pine Needle Duff Clear Zone
Raised Asphalt Trail On Permeable Fill - 10' Wide	Riparian Wetland
Boardwalk Trail No Rail - 12' Wide	Emergent Floodplain Wetland
Boardwalk Trail with Rail - 12' Wide	Montane Dry Meadow Wetland
Bridge	

LINWORK LEGEND

Land Capability Boundary
SEZ Setback
Project Area Boundary (Where project area boundary coincides with land capability boundary or parcel lines, project boundary linework may be most visible)
Contours - at 1' Interval (every fifth is represented by heavier lineweight)
Tree Cover Outlines
Parcel Lines
100 Year Floodplain
Floodway
Limit of Cut/Fill (Daylight)

*Note: Linetypes shown are for preliminary reference only. Additional linework on plans may have similar lineweights and styles.

DESIGNWORKSHOP

Landscape Architecture • Land Planning
Urban Design • Tourism Planning
Asheville • Aspen • Austin • Denver
Salt Lake City • Phoenix • Lake Tahoe
P.O. Box 5666
128 Market Street, Suite 3E
Stateline, Nevada 89449-5666
(775) 588-5929
Facsimile (775) 588-1559
WWW.DESIGNWORKSHOP.COM



**SOUTH TAHOE GREENWAY
PHASE 1B AND 2
CALIFORNIA TAHOE CONSERVANCY
SOUTH LAKE TAHOE, CALIFORNIA**

ISSUE DATE: January 2016

REVISIONS

DRAWN: SG/BM REVIEWED: SG/BM

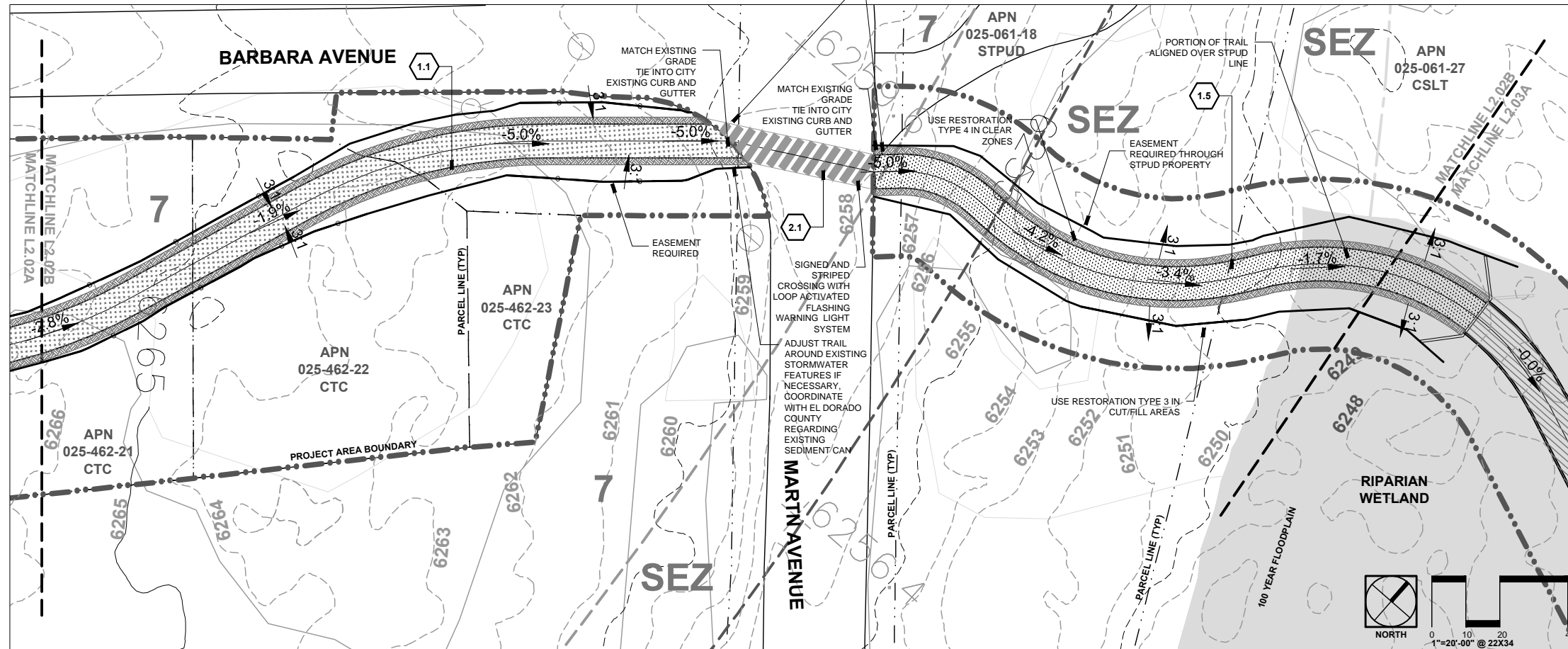
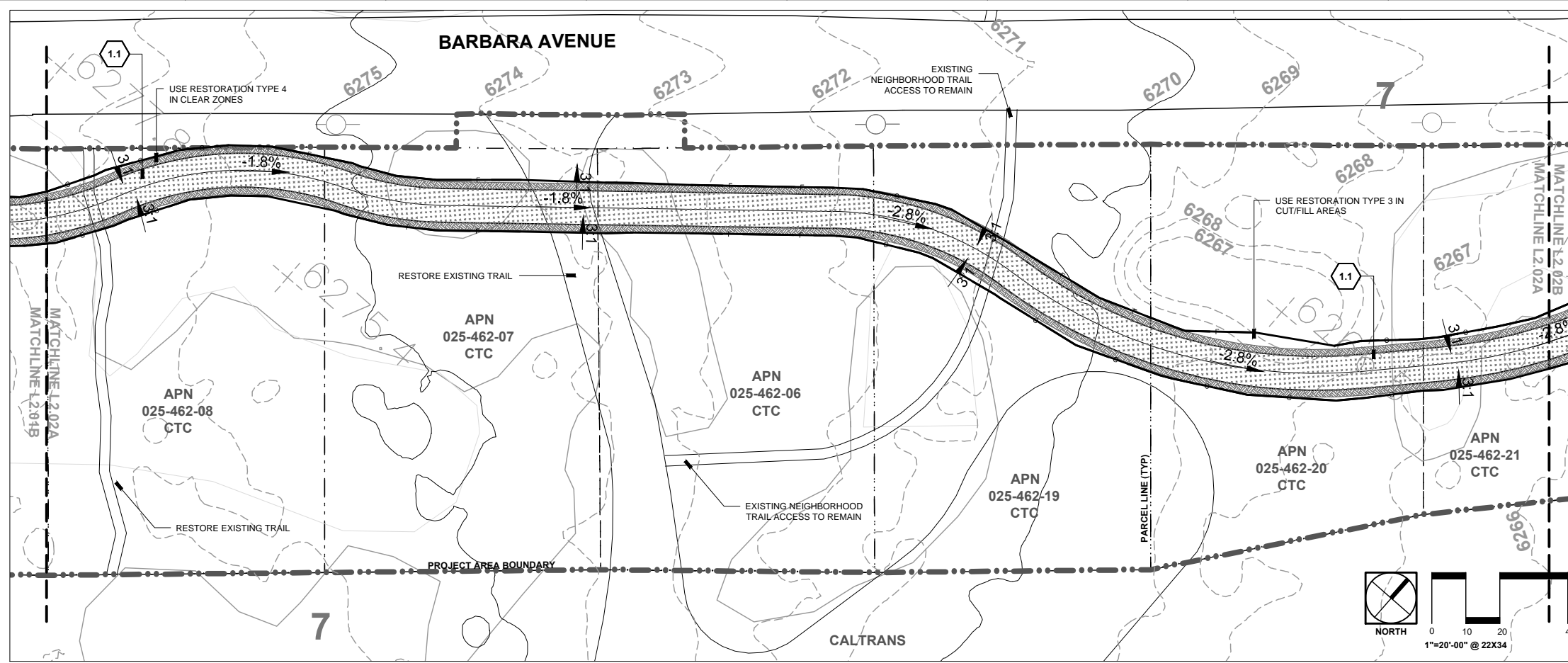
Preliminary Design Project Submittal

PROJECT NUMBER: 5416

Grading and Materials Plan

SHEET NUMBER

L2.01



SITE DETAIL KEYNOTES: DETAIL/SHEET

KEYNOTE	DETAIL/SHEET
1.0 PAVING AND BOARDWALKS	
1.1 10' Asphalt Trail On Grade	L3.01
1.2 Decking Layout	L3.01
1.3 12' Boardwalk With Rail	L3.01
1.4 12' Boardwalk No Rail	L3.01
1.5 Raised Asphalt Trail On Permeable Fill	L3.01
1.6 Helical Beam Bracket Extension	L3.02
1.7 Boardwalk End Joist Connection	L3.02
1.8 Trout Creek Bridge	L3.02
2.0 BIKE CROSSINGS	
2.1 Primary Road Crossing at Intersection - With Pedestrian Activated Warning System Light	L3.03
3.0 SECTION NOT USED	
4.0 RAILINGS AND BARRIERS	
4.1 Boardwalk Railing	L3.03
4.2 Boardwalk Curb	L3.03
4.3 Boardwalk Curb Detail	L3.03
4.4 Post-Rail Elevation Detail	L3.03
4.5 Post-Rail Section Detail	L3.03
4.6 Split Rail Fence	L3.04
5.0 SECTION NOT USED	
6.0 PLANTING AND REVEGETATION	
6.1 Decommissioned Trail Restoration	L3.04
6.2 Trail Corraling	L3.04
6.3 Shrub Planting	L3.04

MATERIALS SYMBOL LEGEND

	Asphalt Trail on Grade - 10' Wide		Pine Needle Duff Clear Zone
	Raised Asphalt Trail On Permeable Fill - 10' Wide		Riparian Wetland
	Boardwalk Trail No Rail - 12' Wide		Emergent Floodplain Wetland
	Boardwalk Trail with Rail - 12' Wide		Montane Dry Meadow Wetland
	Bridge		

LINWORK LEGEND

	Land Capability Boundary
	SEZ Setback
	Project Area Boundary (Where project area boundary coincides with land capability boundary or parcel lines, project boundary linework may be most visible)
	Contours - at 1' Interval (every fifth is represented by heavier linework)
	Tree Cover Outlines
	Parcel Lines
	100 Year Floodplain
	Floodway
	Limit of Cut/Fill (Daylight)

*Note: Linetypes shown are for preliminary reference only. Additional linework on plans may have similar lineweights and styles.

DESIGNWORKSHOP

Landscape Architecture • Land Planning
 Urban Design • Tourism Planning
 Asheville • Aspen • Austin • Denver
 Salt Lake City • Phoenix • Lake Tahoe
 P.O. Box 5666
 128 Market Street, Suite 3E
 Stateline, Nevada 89449-5666
 (775) 588-5929
 Facsimile (775) 588-1559
 WWW.DESIGNWORKSHOP.COM



**SOUTH TAHOE GREENWAY
 PHASE 1B AND 2
 CALIFORNIA TAHOE CONSERVANCY
 SOUTH LAKE TAHOE, CALIFORNIA**

ISSUE DATE: January 2016
 REVISIONS

NO.	DATE	DESCRIPTION

DRAWN: SG/BM REVIEWED: SG/BM

Preliminary Design Project Submittal

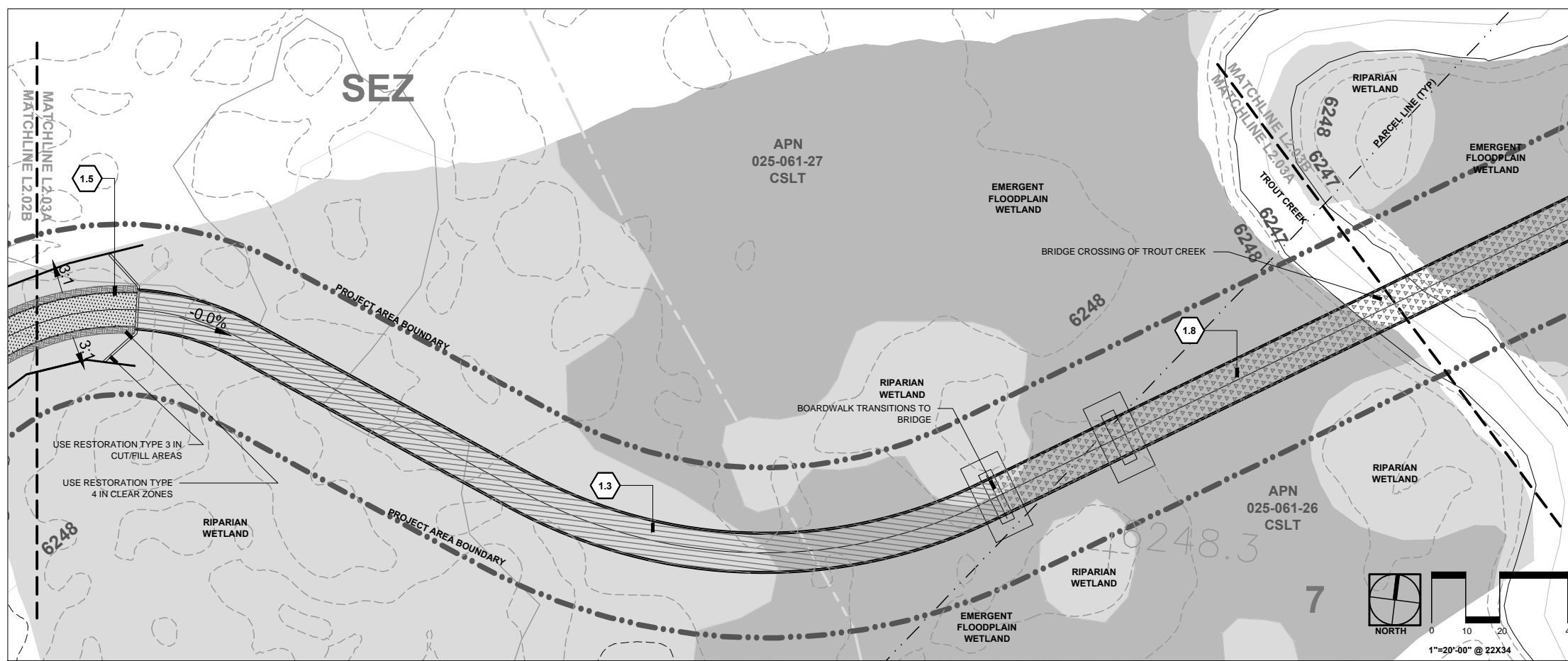
PROJECT NUMBER: 5416

Grading and Materials Plan

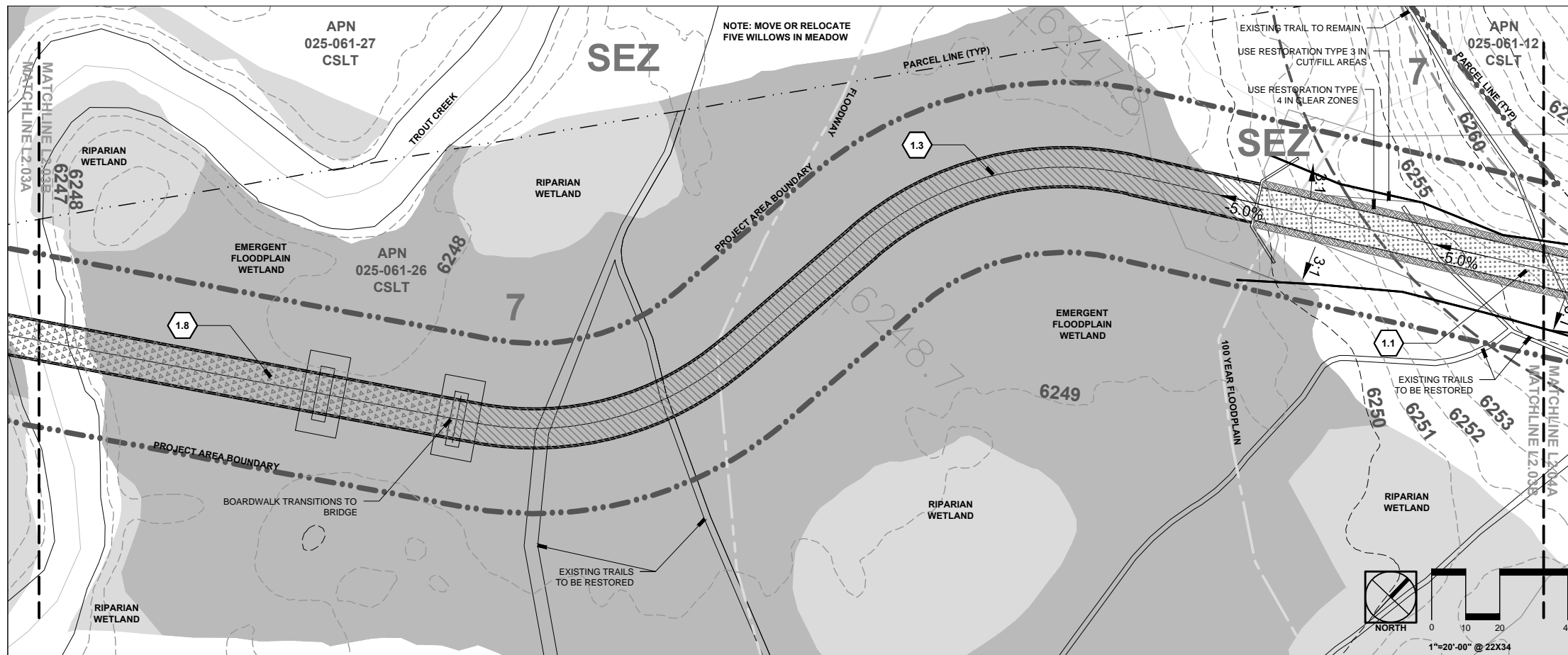
SHEET NUMBER

L2.02

© COPYRIGHT DESIGNWORKSHOP, INC.



A Map Inset A



B Map Inset B

SITE DETAIL KEYNOTES:		DETAIL/SHEET
1.0 PAVING AND BOARDWALKS		
1.1	10' Asphalt Trail On Grade	L3.01
1.2	Decking Layout	L3.01
1.3	12' Boardwalk With Rail	L3.01
1.4	12' Boardwalk No Rail	L3.01
1.5	Raised Asphalt Trail On Permeable Fill	L3.01
1.6	Helical Beam Bracket Extension	L3.02
1.7	Boardwalk End Joist Connection	L3.02
1.8	Trout Creek Bridge	L3.02
2.0 BIKE CROSSINGS		
2.1	Primary Road Crossing at Intersection - With Pedestrian Activated Warning System Light	L3.03
3.0 SECTION NOT USED		
4.0 RAILINGS AND BARRIERS		
4.1	Boardwalk Railing	L3.03
4.2	Boardwalk Curb	L3.03
4.3	Boardwalk Curb Detail	L3.03
4.4	Post-Rail Elevation Detail	L3.03
4.5	Post-Rail Section Detail	L3.03
4.6	Split Rail Fence	L3.04
5.0 SECTION NOT USED		
6.0 PLANTING AND REVEGETATION		
6.1	Decommissioned Trail Restoration	L3.04
6.2	Trail Corraling	L3.04
6.3	Shrub Planting	L3.04

MATERIALS SYMBOL LEGEND

	Asphalt Trail on Grade - 10' Wide		Pine Needle Duff Clear Zone
	Raised Asphalt Trail On Permeable Fill - 10' Wide		Riparian Wetland
	Boardwalk Trail No Rail - 12' Wide		Emergent Floodplain Wetland
	Boardwalk Trail with Rail - 12' Wide		Montane Dry Meadow Wetland
	Bridge		

LINWORK LEGEND

	Land Capability Boundary
	SEZ Setback
	Project Area Boundary (Where project area boundary coincides with land capability boundary or parcel lines, project boundary linework may be most visible)
	Contours - at 1' Interval (every fifth is represented by heavier linework)
	Tree Cover Outlines
	Parcel Lines
	100 Year Floodplain
	Floodway
	Limit of Cut/Fill (Daylight)

*Note: Linetypes shown are for preliminary reference only. Additional linework on plans may have similar lineweights and styles.

DESIGNWORKSHOP

Landscape Architecture • Land Planning
Urban Design • Tourism Planning

Asheville • Aspen • Austin • Denver
Salt Lake City • Phoenix • Lake Tahoe

P.O. Box 5666
128 Market Street, Suite 3E
Stateline, Nevada 89449-5666
(775) 588-5929

Facsimile (775) 588-1559

WWW.DESIGNWORKSHOP.COM



225 KINGSBURY GRADE, SUITE A
STATELINE, NV 89449
PH.: (775) 588-6490
FAX: (775) 588-6479

**SOUTH TAHOE GREENWAY
PHASE 1B AND 2
CALIFORNIA TAHOE CONSERVANCY
SOUTH LAKE TAHOE, CALIFORNIA**

ISSUE DATE: January 2016

REVISIONS

NO.	DESCRIPTION	DATE

DRAWN: SG/BM REVIEWED: SG/BM

**Preliminary
Design Project
Submittal**

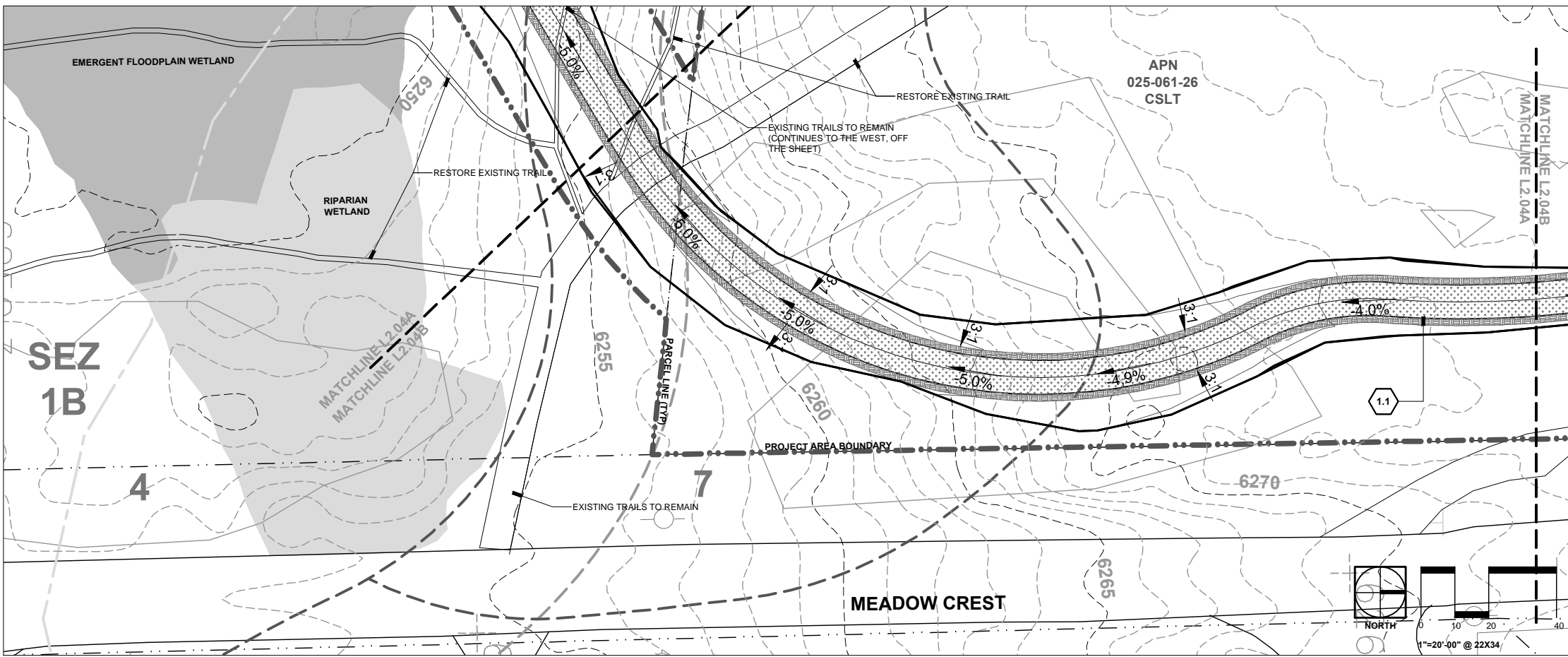
PROJECT NUMBER: 5416

**Grading and
Materials
Plan**

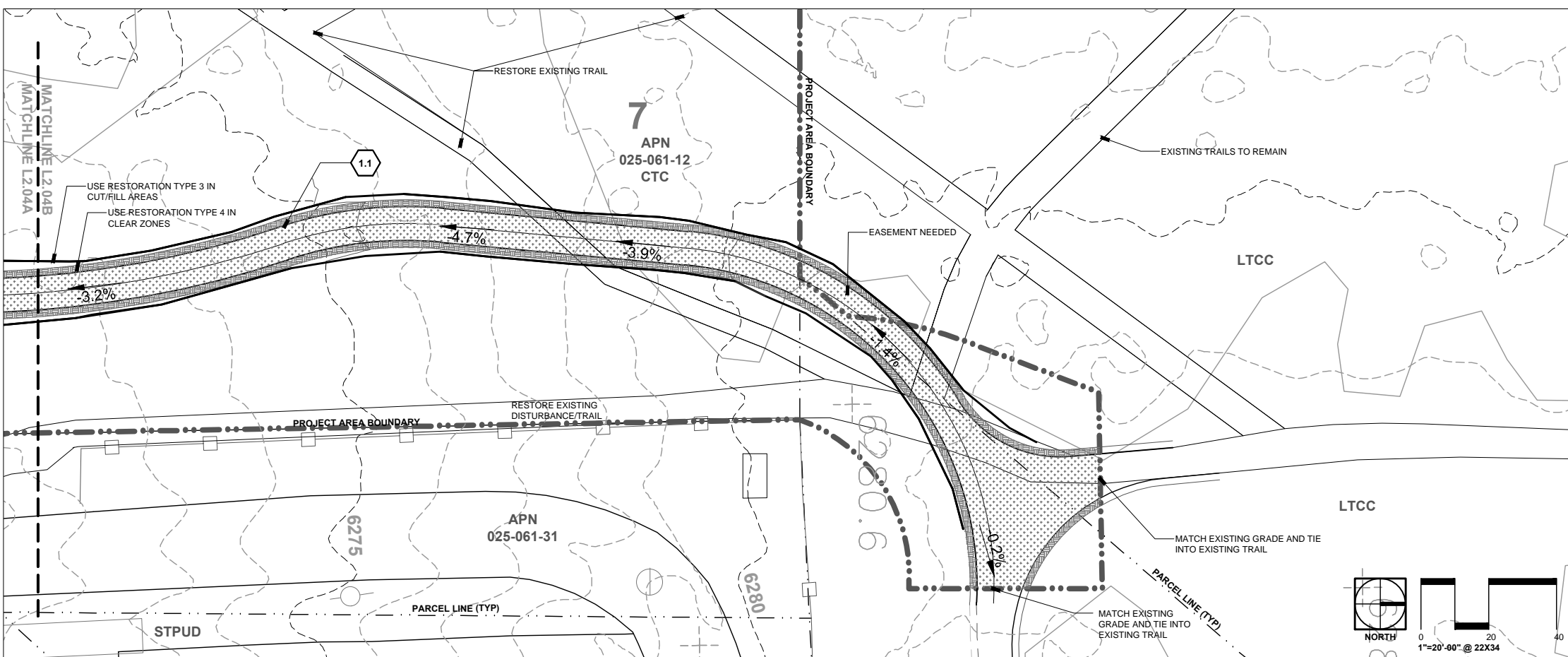
SHEET NUMBER

L2.03

©COPYRIGHT DESIGNWORKSHOP, INC.



A Map Inset A



B Map Inset B

SITE DETAIL KEYNOTES: DETAIL/SHEET

- 1.0 PAVING AND BOARDWALKS**
- | | |
|--|-------|
| 1.1 10' Asphalt Trail On Grade | L3.01 |
| 1.2 Decking Layout | L3.01 |
| 1.3 12' Boardwalk With Rail | L3.01 |
| 1.4 12' Boardwalk No Rail | L3.01 |
| 1.5 Raised Asphalt Trail On Permeable Fill | L3.01 |
| 1.6 Helical Beam Bracket Extension | L3.02 |
| 1.7 Boardwalk End Joist Connection | L3.02 |
| 1.8 Trout Creek Bridge | L3.02 |

- 2.0 BIKE CROSSINGS**
- | | |
|--|-------|
| 2.1 Primary Road Crossing at Intersection - With Pedestrian Activated Warning System Light | L3.03 |
|--|-------|

- 3.0 SECTION NOT USED**

- 4.0 RAILINGS AND BARRIERS**
- | | |
|--------------------------------|-------|
| 4.1 Boardwalk Railing | L3.03 |
| 4.2 Boardwalk Curb | L3.03 |
| 4.3 Boardwalk Curb Detail | L3.03 |
| 4.4 Post-Rail Elevation Detail | L3.03 |
| 4.5 Post-Rail Section Detail | L3.03 |
| 4.6 Split Rail Fence | L3.04 |

- 5.0 SECTION NOT USED**

- 6.0 PLANTING AND REVEGETATION**
- | | |
|--------------------------------------|-------|
| 6.1 Decommissioned Trail Restoration | L3.04 |
| 6.2 Trail Corraling | L3.04 |
| 6.3 Shrub Planting | L3.04 |

MATERIALS SYMBOL LEGEND

- | | | | |
|--|---|--|-----------------------------|
| | Asphalt Trail on Grade - 10' Wide | | Pine Needle Duff Clear Zone |
| | Raised Asphalt Trail On Permeable Fill - 10' Wide | | Riparian Wetland |
| | Boardwalk Trail No Rail - 12' Wide | | Emergent Floodplain Wetland |
| | Boardwalk Trail with Rail - 12' Wide | | Montane Dry Meadow Wetland |
| | Bridge | | |

LINWORK LEGEND

- Land Capability Boundary
 - SEZ Setback
 - Project Area Boundary (Where project area boundary coincides with land capability boundary or parcel lines, project boundary linework may be most visible)
 - Contours - at 1' Interval (every fifth is represented by heavier linework)
 - Tree Cover Outlines
 - Parcel Lines
 - 100 Year Floodplain
 - Floodway
 - Limit of Cut/Fill (Daylight)
- *Note: Linetypes shown are for preliminary reference only. Additional linework on plans may have similar lineweights and styles.

DESIGNWORKSHOP

Landscape Architecture • Land Planning
Urban Design • Tourism Planning
Asheville • Aspen • Austin • Denver
Salt Lake City • Phoenix • Lake Tahoe
P.O. Box 5666
128 Market Street, Suite 3E
Stateline, Nevada 89449-5666
(775) 588-5929
Facsimile (775) 588-1559
WWW.DESIGNWORKSHOP.COM

LUMOS
& ASSOCIATES
225 KINGSBURY GRADE, SUITE A
STATELINE, NV 89449
PH.: (775) 588-6490
FAX: (775) 588-6479

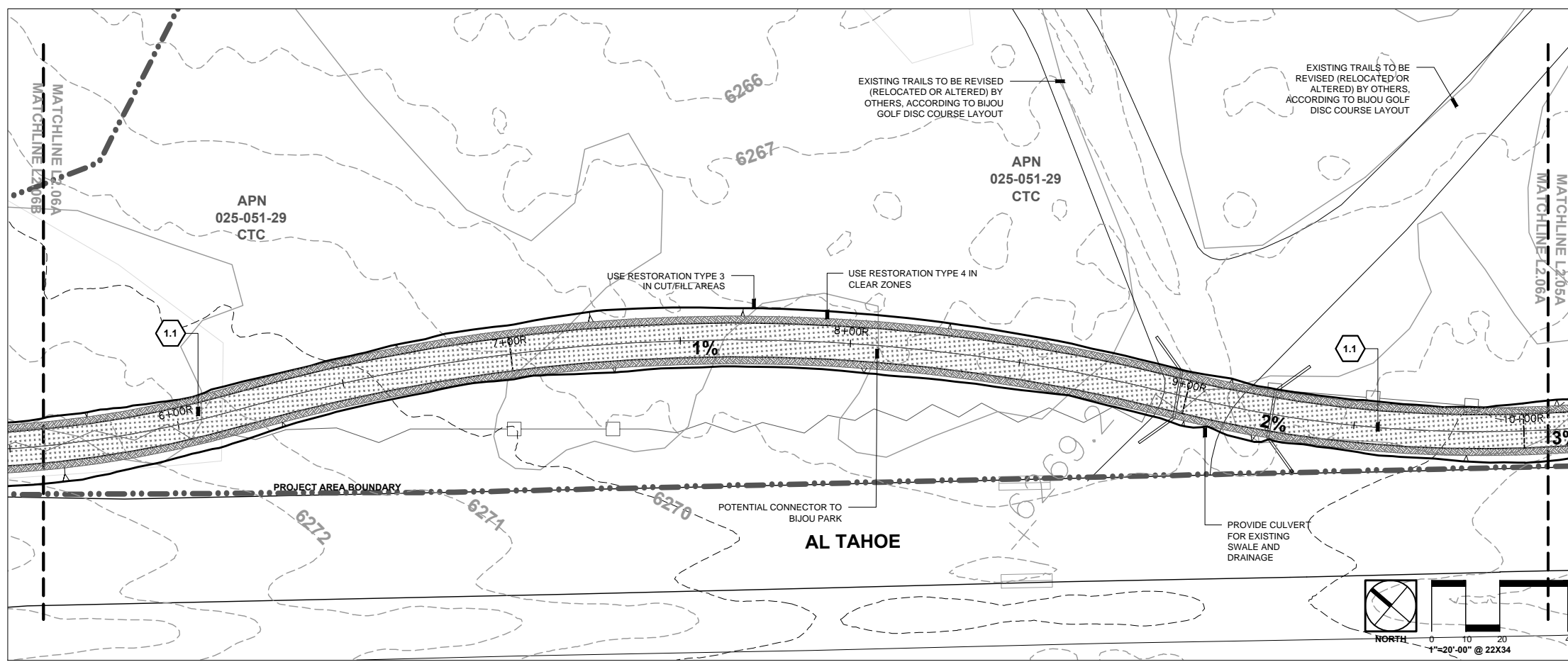
**SOUTH TAHOE GREENWAY
PHASE 1B AND 2
CALIFORNIA TAHOE CONSERVANCY
SOUTH LAKE TAHOE, CALIFORNIA**

ISSUE DATE: January 2016
REVISIONS

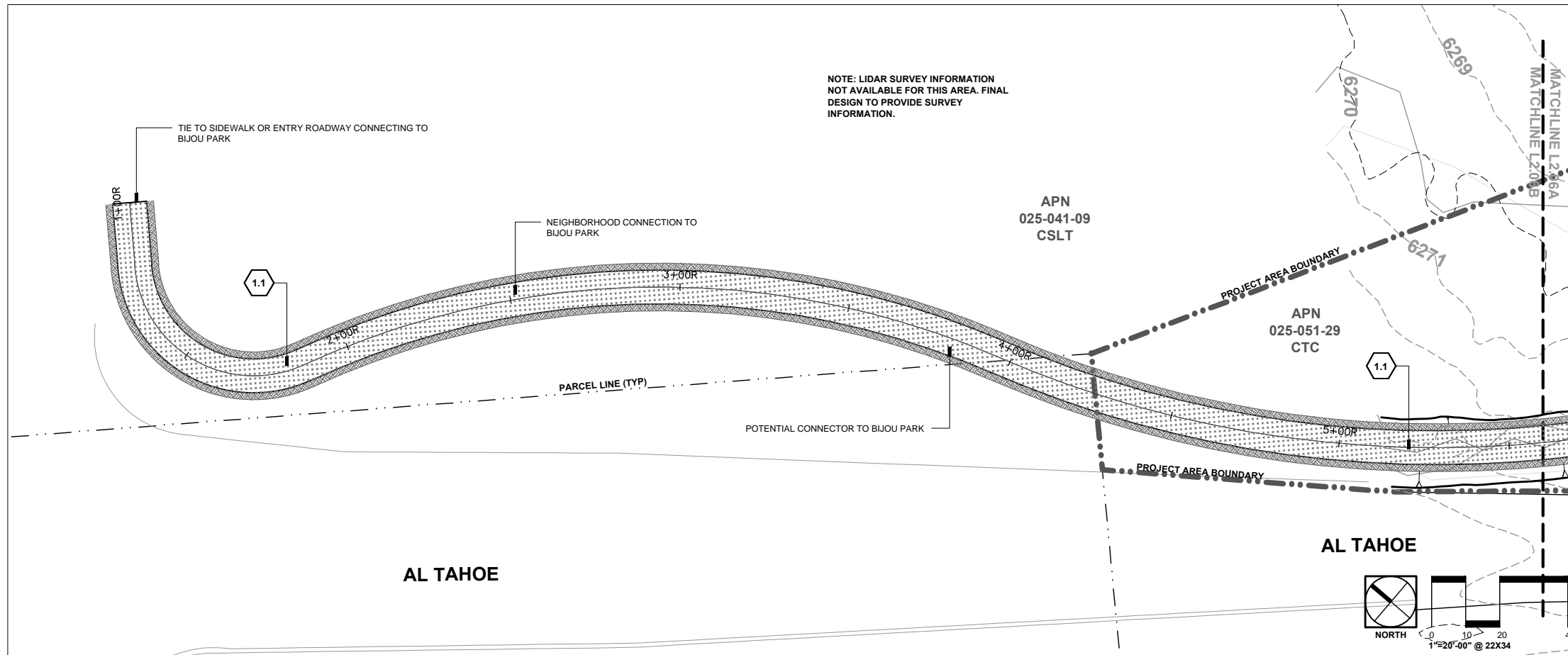
NO.	DESCRIPTION

DRAWN: SG/BM REVIEWED: SG/BM
Preliminary Design Project Submittal
PROJECT NUMBER: 5416
Grading and Materials Plan
SHEET NUMBER

L2.04
©COPYRIGHT DESIGNWORKSHOP, INC.



A Map Inset A



B Map Inset B

SITE DETAIL KEYNOTES:

	DETAIL/SHEET
1.0 PAVING AND BOARDWALKS	
1.1 10' Asphalt Trail On Grade	L3.01
1.2 Decking Layout	L3.01
1.3 12' Boardwalk With Rail	L3.01
1.4 12' Boardwalk No Rail	L3.01
1.5 Raised Asphalt Trail On Permeable Fill	L3.01
1.6 Helical Beam Bracket Extension	L3.02
1.7 Boardwalk End Joist Connection	L3.02
1.8 Trout Creek Bridge	L3.02
2.0 BIKE CROSSINGS	
2.1 Primary Road Crossing at Intersection - With Pedestrian Activated Warning System Light	L3.03
3.0 SECTION NOT USED	
4.0 RAILINGS AND BARRIERS	
4.1 Boardwalk Railing	L3.03
4.2 Boardwalk Curb	L3.03
4.3 Boardwalk Curb Detail	L3.03
4.4 Post-Rail Elevation Detail	L3.03
4.5 Post-Rail Section Detail	L3.03
4.6 Split Rail Fence	L3.04
5.0 SECTION NOT USED	
6.0 PLANTING AND REVEGETATION	
6.1 Decommissioned Trail Restoration	L3.04
6.2 Trail Corraling	L3.04
6.3 Shrub Planting	L3.04

MATERIALS SYMBOL LEGEND

	Asphalt Trail on Grade - 10' Wide		Pine Needle Duff Clear Zone
	Raised Asphalt Trail On Permeable Fill - 10' Wide		Riparian Wetland
	Boardwalk Trail No Rail - 12' Wide		Emergent Floodplain Wetland
	Boardwalk Trail with Rail - 12' Wide		Montane Dry Meadow Wetland
	Bridge		

LINWORK LEGEND

	Land Capability Boundary
	SEZ Setback
	Project Area Boundary (Where project area boundary coincides with land capability boundary or parcel lines, project boundary linework may be most visible)
	Contours - at 1' Interval (every fifth is represented by heavier linework)
	Tree Cover Outlines
	Parcel Lines
	100 Year Floodplain
	Floodway
	Limit of Cut/Fill (Daylight)

*Note: Linetypes shown are for preliminary reference only. Additional linework on plans may have similar lineweights and styles.

DESIGNWORKSHOP

Landscape Architecture • Land Planning
Urban Design • Tourism Planning

Asheville • Aspen • Austin • Denver
Salt Lake City • Phoenix • Lake Tahoe

P.O. Box 5666
128 Market Street, Suite 3E
Stateline, Nevada 89449-5666
(775) 588-5929
Facsimile (775) 588-1559

WWW.DESIGNWORKSHOP.COM



225 KINGSBURY GRADE, SUITE A
STATELINE, NV 89449
PH.: (775) 588-6490
FAX: (775) 588-6479

**SOUTH TAHOE GREENWAY
PHASE 1B AND 2
CALIFORNIA TAHOE CONSERVANCY
SOUTH LAKE TAHOE, CALIFORNIA**

ISSUE DATE: January 2016

REVISIONS

NO.	DESCRIPTION	DATE

DRAWN: SG/BM REVIEWED: SG/BM

**Preliminary
Design Project
Submittal**

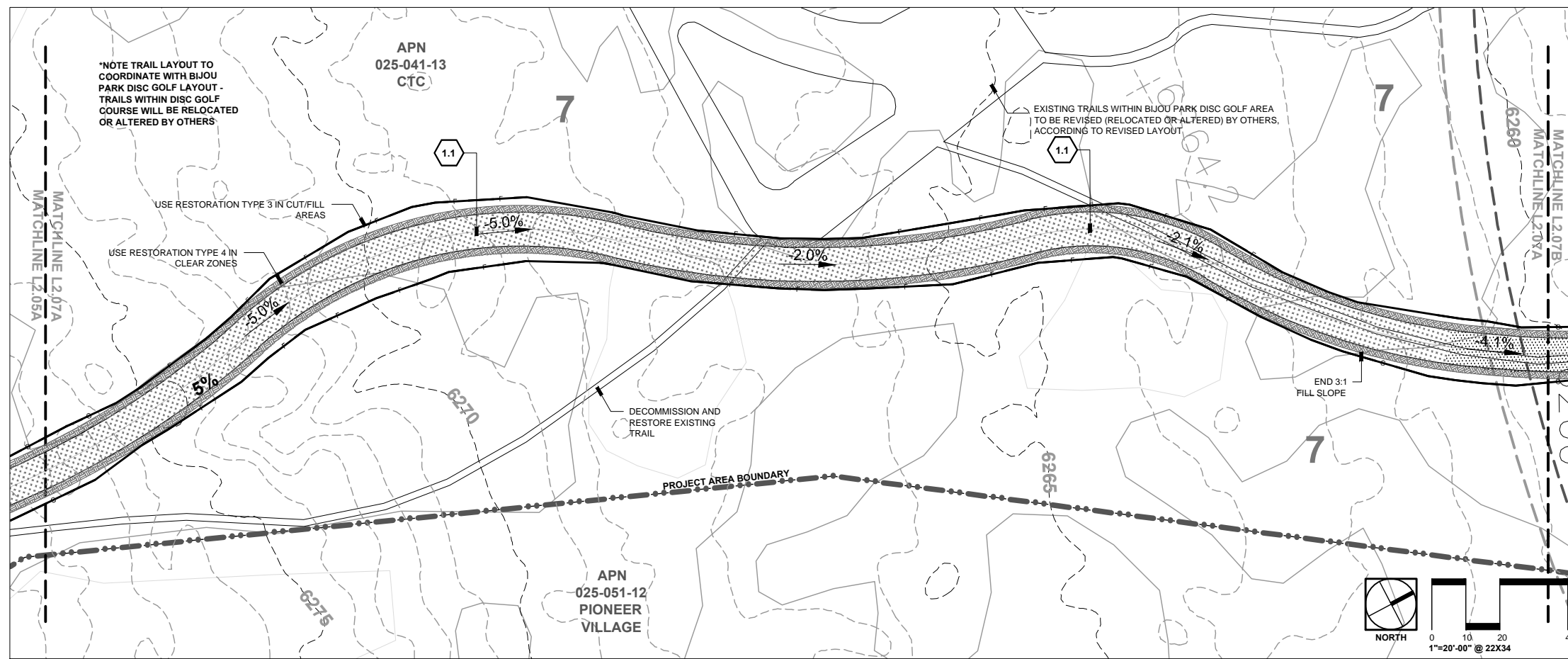
PROJECT NUMBER: 5416

**Grading and
Materials
Plan**

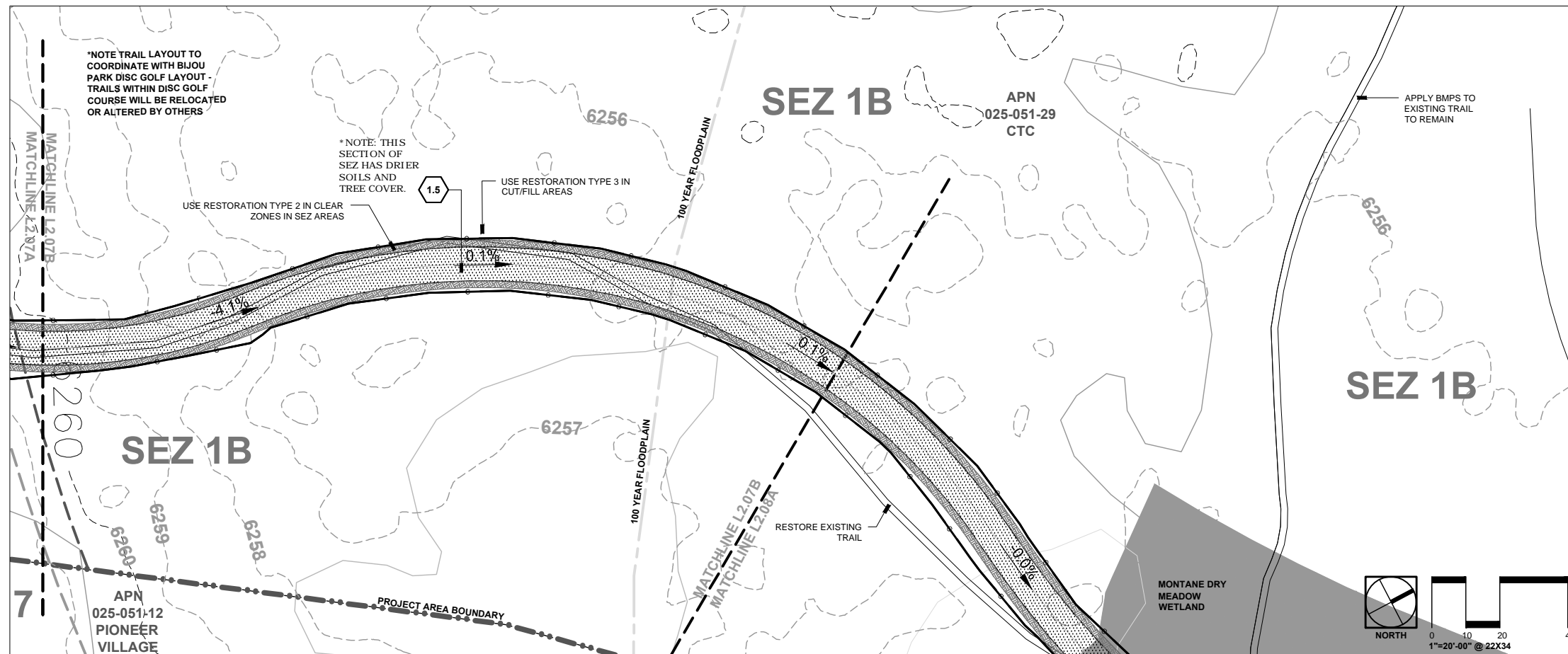
SHEET NUMBER

L2.06

© COPYRIGHT DESIGNWORKSHOP, INC.



A Map Inset A



B Map Inset B

SITE DETAIL KEYNOTES:

DETAIL/SHEET			
1.0	PAVING AND BOARDWALKS		
	1.1	10' Asphalt Trail On Grade	L3.01
	1.2	Decking Layout	L3.01
	1.3	12' Boardwalk With Rail	L3.01
	1.4	12' Boardwalk No Rail	L3.01
	1.5	Raised Asphalt Trail On Permeable Fill	L3.01
	1.6	Helical Beam Bracket Extension	L3.02
	1.7	Boardwalk End Joist Connection	L3.02
1.8	Trout Creek Bridge	L3.02	
2.0	BIKE CROSSINGS		
2.1	Primary Road Crossing at Intersection - With Pedestrian Activated Warning System Light	L3.03	
3.0	SECTION NOT USED		
4.0	RAILINGS AND BARRIERS		
4.1	Boardwalk Railing	L3.03	
4.2	Boardwalk Curb	L3.03	
4.3	Boardwalk Curb Detail	L3.03	
4.4	Post-Rail Elevation Detail	L3.03	
4.5	Post-Rail Section Detail	L3.03	
4.6	Split Rail Fence	L3.04	
5.0	SECTION NOT USED		
6.0	PLANTING AND REVEGETATION		
6.1	Decommissioned Trail Restoration	L3.04	
6.2	Trail Corraling	L3.04	
6.3	Shrub Planting	L3.04	

MATERIALS SYMBOL LEGEND

[Symbol]	Asphalt Trail on Grade - 10' Wide	[Symbol]	Pine Needle Duff Clear Zone
[Symbol]	Raised Asphalt Trail On Permeable Fill - 10' Wide	[Symbol]	Riparian Wetland
[Symbol]	Boardwalk Trail No Rail - 12' Wide	[Symbol]	Emergent Floodplain Wetland
[Symbol]	Boardwalk Trail with Rail - 12' Wide	[Symbol]	Montane Dry Meadow Wetland
[Symbol]	Bridge		

LINWORK LEGEND

[Symbol]	Land Capability Boundary
[Symbol]	SEZ Setback
[Symbol]	Project Area Boundary (Where project area boundary coincides with land capability boundary or parcel lines, project boundary linework may be most visible)
[Symbol]	Contours - at 1' Interval (every fifth is represented by heavier linework)
[Symbol]	Tree Cover Outlines
[Symbol]	Parcel Lines
[Symbol]	100 Year Floodplain
[Symbol]	Floodway
[Symbol]	Limit of Cut/Fill (Daylight)

*Note: Linetypes shown are for preliminary reference only. Additional linework on plans may have similar lineweights and styles.

DESIGNWORKSHOP

Landscape Architecture • Land Planning
Urban Design • Tourism Planning

Asheville • Aspen • Austin • Denver
Salt Lake City • Phoenix • Lake Tahoe

P.O. Box 5666
128 Market Street, Suite 3E
Stateline, Nevada 89449-5666
(775) 588-5929

Facsimile (775) 588-1559

WWW.DESIGNWORKSHOP.COM



LUMOS & ASSOCIATES

225 KINGSBURY GRADE, SUITE A
STATELINE, NV 89449
PH.: (775) 588-6490
FAX: (775) 588-6479

**SOUTH TAHOE GREENWAY
PHASE 1B AND 2
CALIFORNIA TAHOE CONSERVANCY
SOUTH LAKE TAHOE, CALIFORNIA**

ISSUE DATE: January 2016

REVISIONS

DRAWN: SG/BM REVIEWED: SG/BM

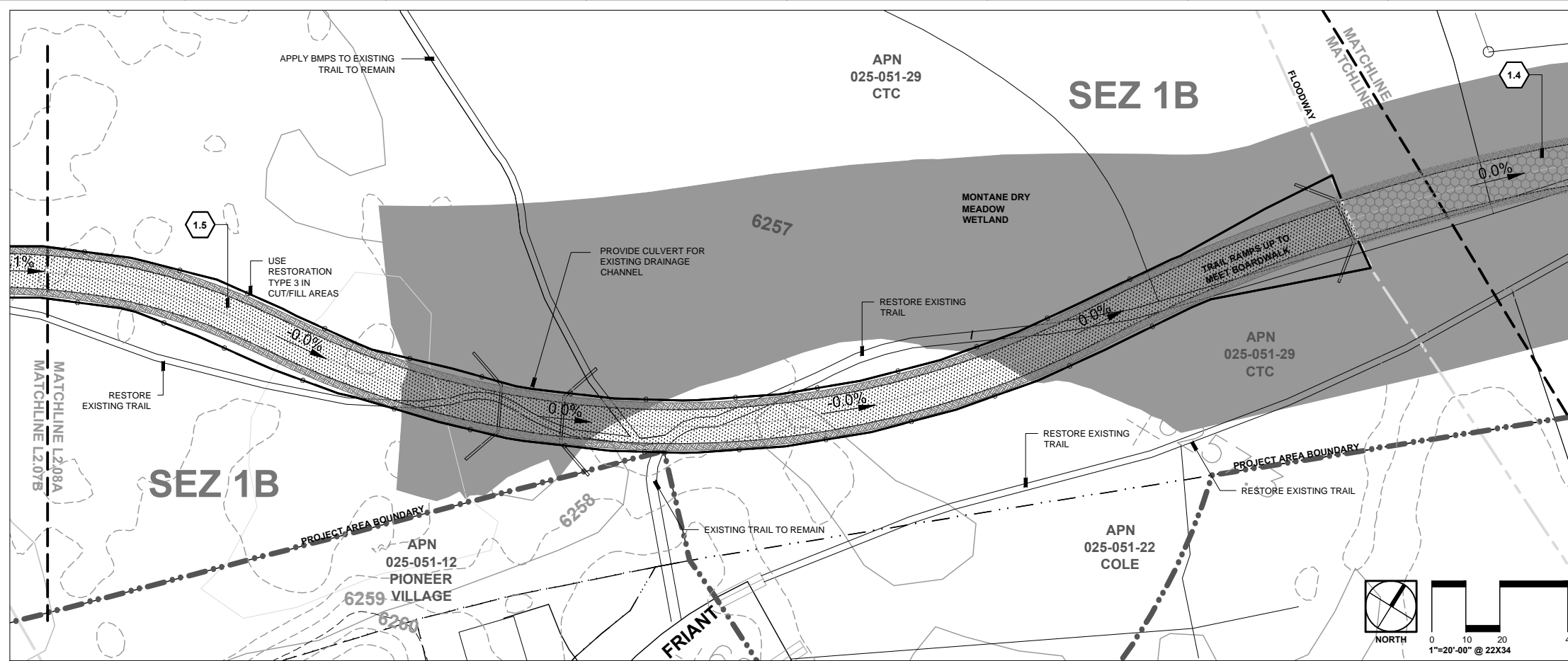
**Preliminary
Design Project
Submittal**

PROJECT NUMBER: 5416

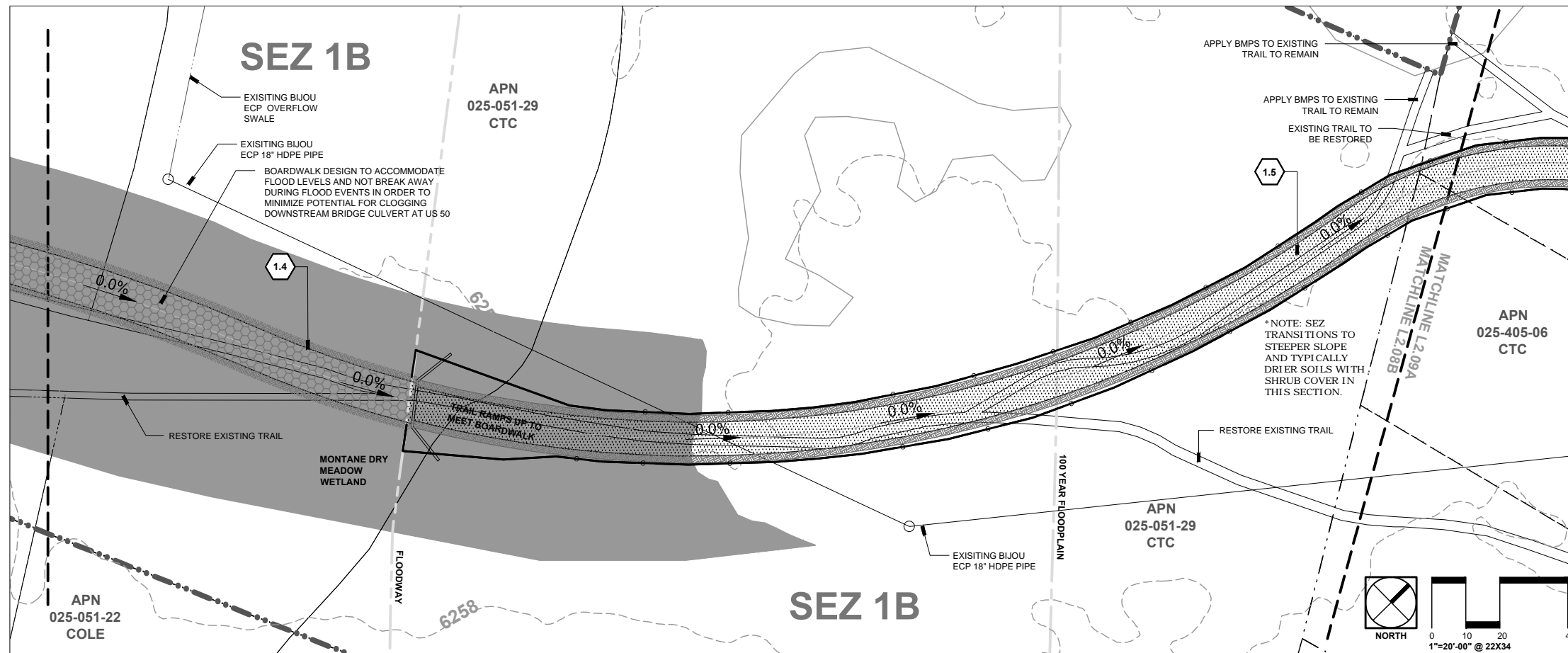
**Grading and
Materials
Plan**

SHEET NUMBER

L2.07



A Map Inset A



B Map Inset B

SITE DETAIL KEYNOTES:		DETAIL/SHEET
1.0	PAVING AND BOARDWALKS	
	1.1	10' Asphalt Trail On Grade L3.01
	1.2	Decking Layout L3.01
	1.3	12' Boardwalk With Rail L3.01
	1.4	12' Boardwalk No Rail L3.01
	1.5	Raised Asphalt Trail On Permeable Fill L3.01
	1.6	Helical Beam Bracket Extension L3.02
	1.7	Boardwalk End Joist Connection L3.02
1.8	Trout Creek Bridge L3.02	
2.0	BIKE CROSSINGS	
2.1	Primary Road Crossing at Intersection - With Pedestrian Activated Warning System Light L3.03	
3.0	SECTION NOT USED	
4.0	RAILINGS AND BARRIERS	
	4.1	Boardwalk Railing L3.03
	4.2	Boardwalk Curb L3.03
	4.3	Boardwalk Curb Detail L3.03
	4.4	Post-Rail Elevation Detail L3.03
	4.5	Post-Rail Section Detail L3.03
4.6	Split Rail Fence L3.04	
5.0	SECTION NOT USED	
6.0	PLANTING AND REVEGETATION	
	6.1	Decommissioned Trail Restoration L3.04
	6.2	Trail Corraling L3.04
	6.3	Shrub Planting L3.04

MATERIALS SYMBOL LEGEND

	Asphalt Trail on Grade - 10' Wide		Pine Needle Duff Clear Zone
	Raised Asphalt Trail On Permeable Fill - 10' Wide		Riparian Wetland
	Boardwalk Trail No Rail - 12' Wide		Emergent Floodplain Wetland
	Boardwalk Trail with Rail - 12' Wide		Montane Dry Meadow Wetland
	Bridge		

LINWORK LEGEND

	Land Capability Boundary
	SEZ Setback
	Project Area Boundary (Where project area boundary coincides with land capability boundary or parcel lines, project boundary linework may be most visible)
	Contours - at 1' Interval (every fifth is represented by heavier linework)
	Tree Cover Outlines
	Parcel Lines
	100 Year Floodplain
	Floodway
	Limit of Cut/Fill (Daylight)

*Note: Linetypes shown are for preliminary reference only. Additional linework on plans may have similar lineweights and styles.

DESIGNWORKSHOP

Landscape Architecture • Land Planning
Urban Design • Tourism Planning

Asheville • Aspen • Austin • Denver
Salt Lake City • Phoenix • Lake Tahoe

P.O. Box 5666
128 Market Street, Suite 3E
Stateline, Nevada 89449-5666
(775) 588-5929

Facsimile (775) 588-1559

WWW.DESIGNWORKSHOP.COM



225 KINGSBURY GRADE, SUITE A
STATELINE, NV 89449
PH.: (775) 588-6490
FAX: (775) 588-6479

SOUTH TAHOE GREENWAY PHASE 1B AND 2 CALIFORNIA TAHOE CONSERVANCY SOUTH LAKE TAHOE, CALIFORNIA

ISSUE DATE: January 2016

REVISIONS

DRAWN: SG/BM REVIEWED: SG/BM

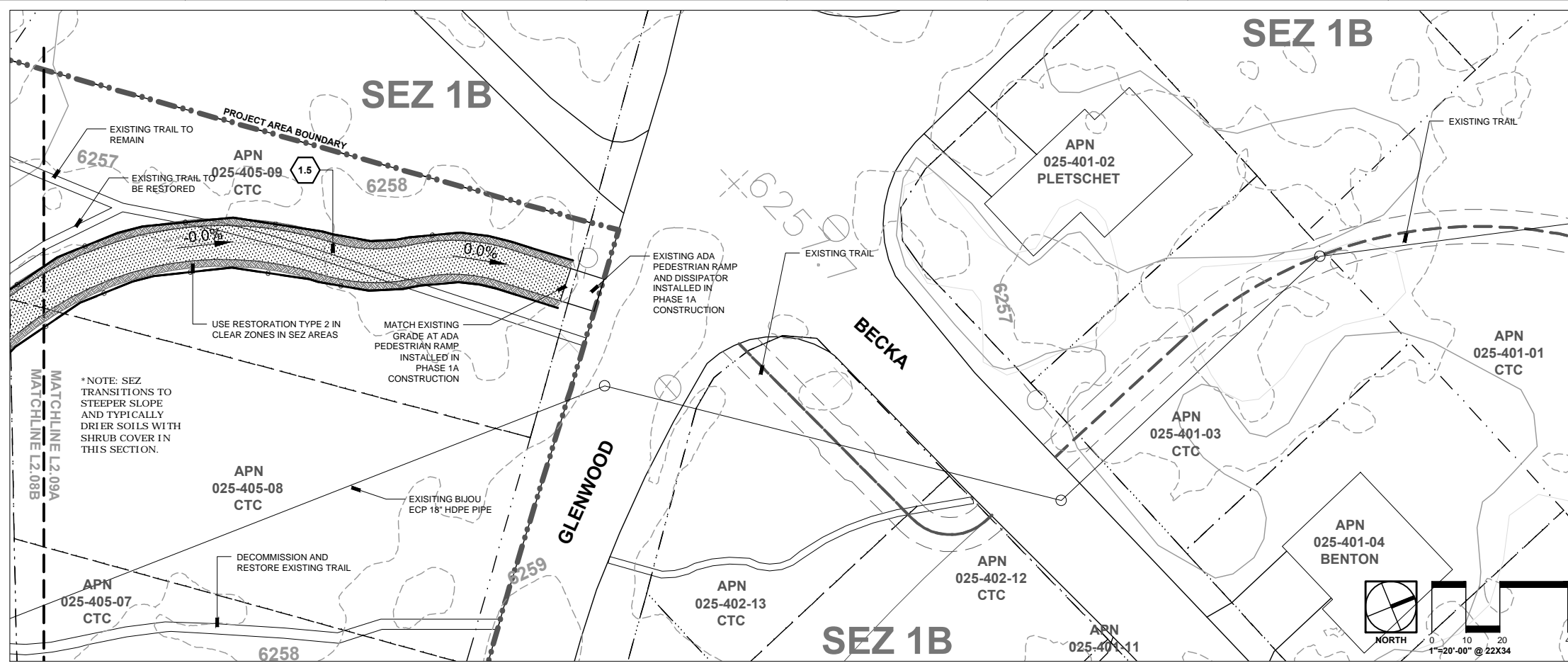
Preliminary Design Project Submittal

PROJECT NUMBER: 5416

Grading and Materials Plan

SHEET NUMBER

L2.08



A Map Inset A

SITE DETAIL KEYNOTES:

KEYNOTE	DETAIL/SHEET
1.0 PAVING AND BOARDWALKS	
1.1 10' Asphalt Trail On Grade	L3.01
1.2 Decking Layout	L3.01
1.3 12' Boardwalk With Rail	L3.01
1.4 12' Boardwalk No Rail	L3.01
1.5 Raised Asphalt Trail On Permeable Fill	L3.01
1.6 Helical Beam Bracket Extension	L3.02
1.7 Boardwalk End Joist Connection	L3.02
1.8 Trout Creek Bridge	L3.02
2.0 BIKE CROSSINGS	
2.1 Primary Road Crossing at Intersection - With Pedestrian Activated Warning System Light	L3.03
3.0 SECTION NOT USED	
4.0 RAILINGS AND BARRIERS	
4.1 Boardwalk Railing	L3.03
4.2 Boardwalk Curb	L3.03
4.3 Boardwalk Curb Detail	L3.03
4.4 Post-Rail Elevation Detail	L3.03
4.5 Post-Rail Section Detail	L3.03
4.6 Split Rail Fence	L3.04
5.0 SECTION NOT USED	
6.0 PLANTING AND REVEGETATION	
6.1 Decommissioned Trail Restoration	L3.04
6.2 Trail Corraling	L3.04
6.3 Shrub Planting	L3.04

MATERIALS SYMBOL LEGEND

Asphalt Trail on Grade - 10' Wide	Pine Needle Duff Clear Zone
Raised Asphalt Trail On Permeable Fill - 10' Wide	Riparian Wetland
Boardwalk Trail No Rail - 12' Wide	Emergent Floodplain Wetland
Boardwalk Trail with Rail - 12' Wide	Montane Dry Meadow Wetland
Bridge	

LINWORK LEGEND

Land Capability Boundary
SEZ Setback
Project Area Boundary (Where project area boundary coincides with land capability boundary or parcel lines, project boundary linework may be most visible)
Contours - at 1' Interval (every fifth is represented by heavier linework)
Tree Cover Outlines
Parcel Lines
100 Year Floodplain
Floodway
Limit of Cut/Fill (Daylight)

*Note: Linetypes shown are for preliminary reference only. Additional linework on plans may have similar lineweights and styles.

DESIGNWORKSHOP

Landscape Architecture • Land Planning
Urban Design • Tourism Planning
*Asheville • Aspen • Austin • Denver
Salt Lake City • Phoenix • Lake Tahoe*
P.O. Box 5666
128 Market Street, Suite 3E
Stateline, Nevada 89449-5666
(775) 588-5929
Facsimile (775) 588-1559
WWW.DESIGNWORKSHOP.COM

**LUMOS
& ASSOCIATES**
225 KINGSBURY GRADE, SUITE A
STATELINE, NV 89449
PH: (775) 588-6490
FAX: (775) 588-6479

**SOUTH TAHOE GREENWAY
PHASE 1B AND 2
CALIFORNIA TAHOE CONSERVANCY
SOUTH LAKE TAHOE, CALIFORNIA**

ISSUE DATE: January 2016

REVISIONS

NO.	DATE	DESCRIPTION

DRAWN: SG/BM REVIEWED: SG/BM

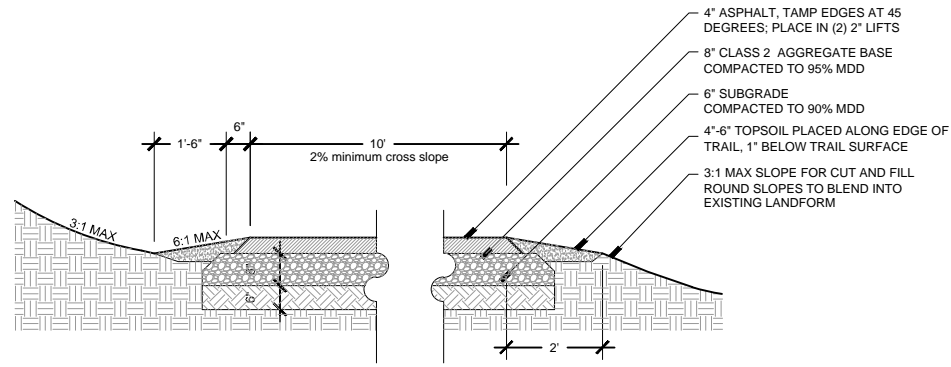
Preliminary Design Project Submittal

PROJECT NUMBER: 5416

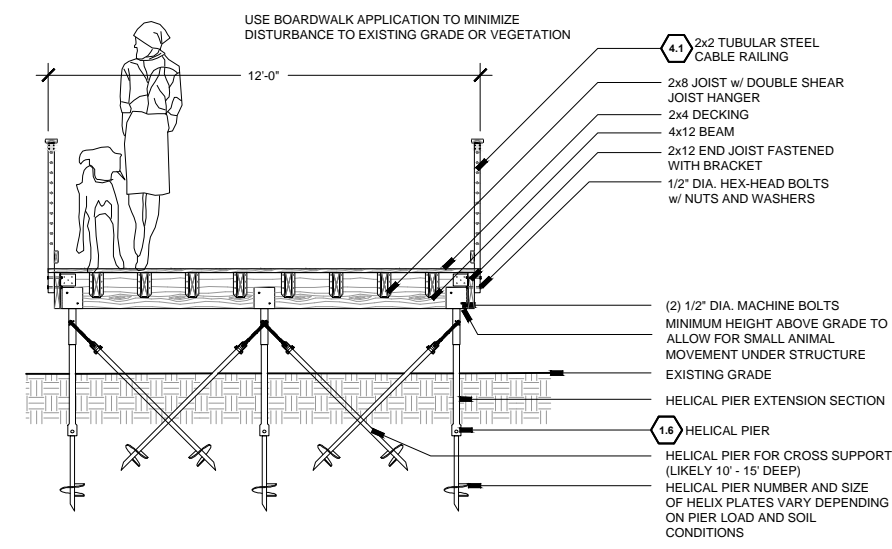
Grading and Materials Plan

SHEET NUMBER

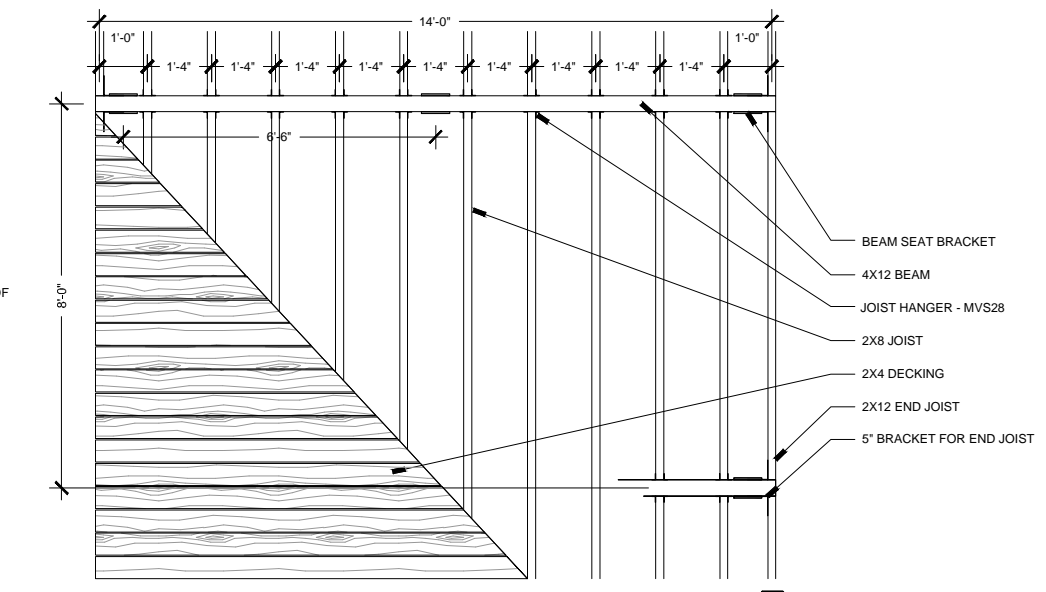
L2.09



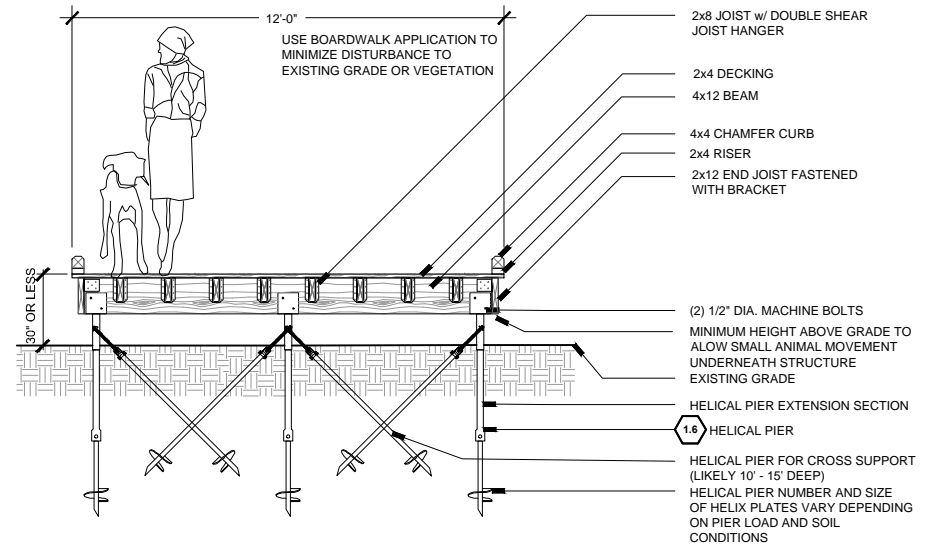
1 Asphalt Trail On Grade
1/2"=1'



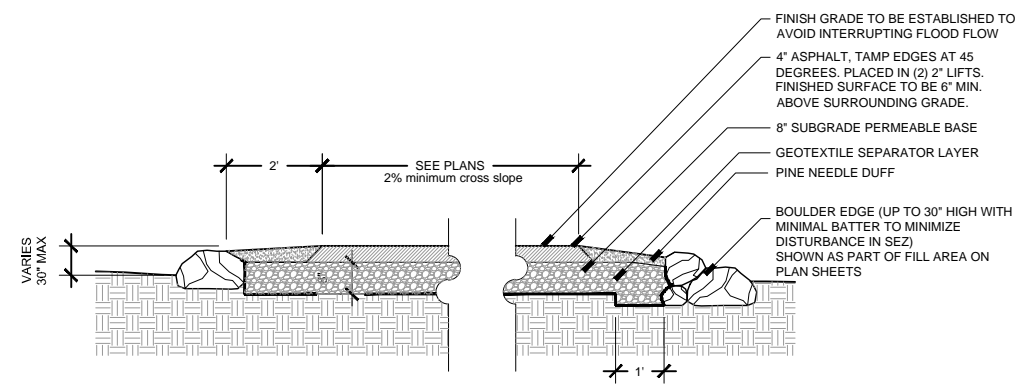
3 12' Boardwalk With Rail
3/8"=1'



2 Decking Layout
1/2"=1'



4 12' Boardwalk No Rail
3/8"=1'



5 Raised Asphalt Trail On Permeable Fill
1/2"=1'

SITE DETAIL KEYNOTES: DETAIL/SHEET

KEYNOTE	DESCRIPTION	DETAIL/SHEET
1.0 PAVING AND BOARDWALKS		
1.1	10' Asphalt Trail On Grade	L6.01
1.2	Decking Layout	L6.01
1.3	12' Boardwalk With Rail	L6.01
1.4	12' Boardwalk No Rail	L6.01
1.5	Raised Asphalt Trail On Permeable Fill	L6.01
1.6	Helical Beam Bracket Extension	L6.02
1.7	Boardwalk End Joist Connection	L6.02
1.8	Trout Creek Bridge	L6.02
2.0 BIKE CROSSINGS		
2.1	Primary Road Crossing at Intersection - With Pedestrian Activated Warning System Light	L6.03
3.0 SECTION NOT USED		
4.0 RAILINGS AND BARRIERS		
4.1	Boardwalk Railing	L6.03
4.2	Boardwalk Curb	L6.03
4.3	Boardwalk Curb Detail	L6.03
4.4	Post-Rail Elevation Detail	L6.03
4.5	Post-Rail Section Detail	L6.03
4.6	Split Rail Fence	L6.04
5.0 SECTION NOT USED		
6.0 PLANTING AND REVEGETATION		
6.1	Decommissioned Trail Restoration	L6.04
6.2	Trail Corraling	L6.04
6.3	Shrub Planting	L6.04

**SOUTH TAHOE GREENWAY
PHASE 1B AND 2
CALIFORNIA TAHOE CONSERVANCY
SOUTH LAKE TAHOE, CALIFORNIA**

ISSUE DATE: January 2016

REVISIONS

DRAWN: SG/BM REVIEWED: SG/BM

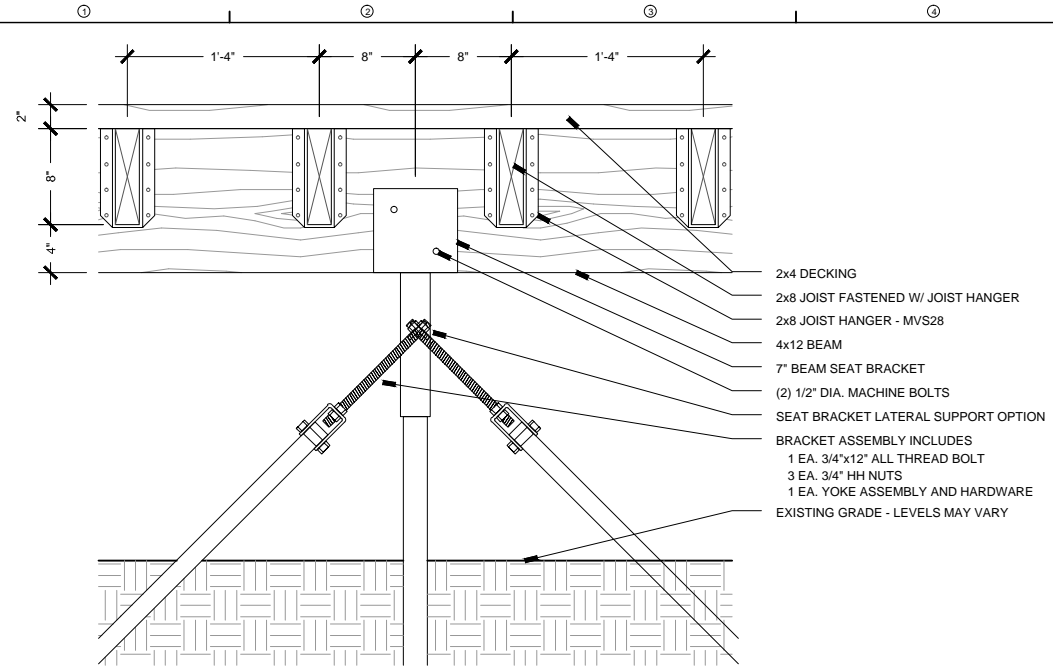
**Preliminary
Design Project
Submittal**

PROJECT NUMBER: 5416

Site Details

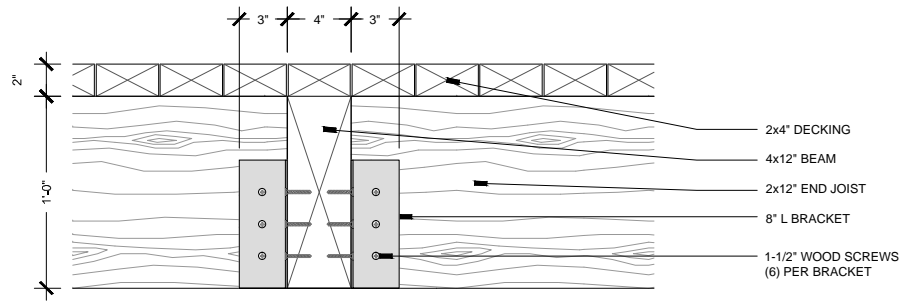
SHEET NUMBER

L3.01



1 Helical Beam Bracket Extension
1-1/2"=1"

1.6

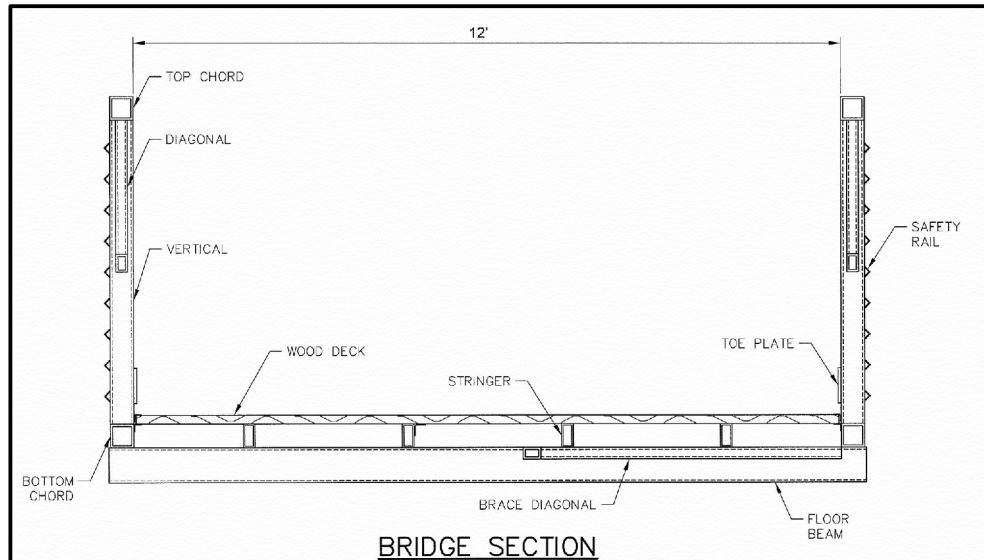


2 Boardwalk End Joist Connection
2"=1"

1.7

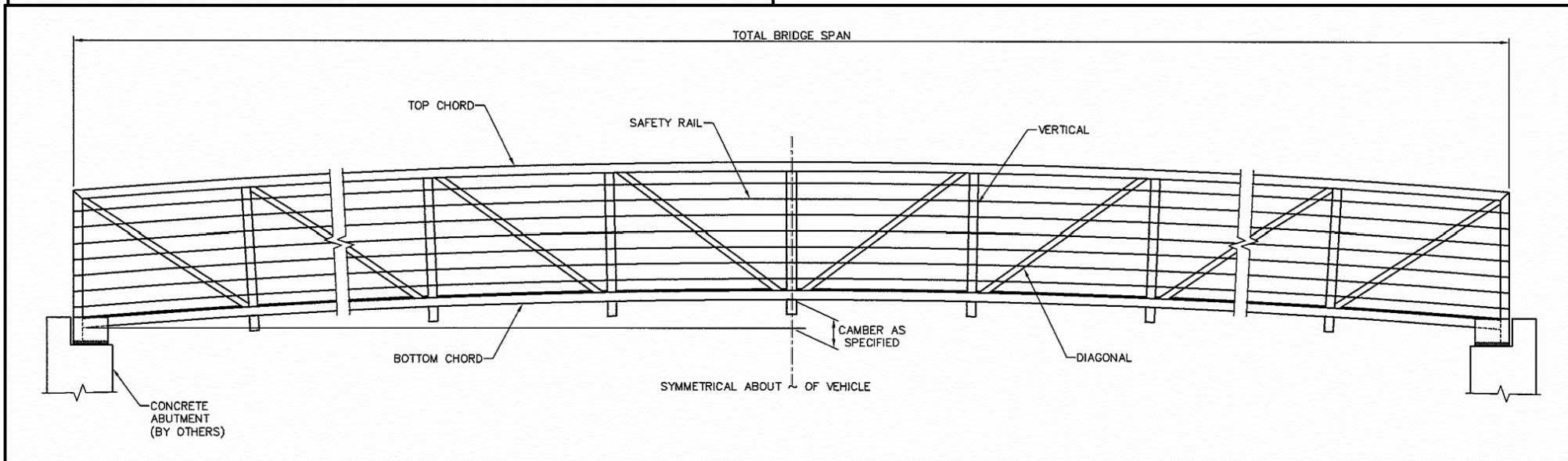
SITE DETAIL KEYNOTES: DETAIL/SHEET

KEYNOTE	DESCRIPTION	DETAIL/SHEET
1.0	PAVING AND BOARDWALKS	
1.1	10' Asphalt Trail On Grade	L6.01
1.2	Decking Layout	L6.01
1.3	12' Boardwalk With Rail	L6.01
1.4	12' Boardwalk No Rail	L6.01
1.5	Raised Asphalt Trail On Permeable Fill	L6.01
1.6	Helical Beam Bracket Extension	L6.02
1.7	Boardwalk End Joist Connection	L6.02
1.8	Trout Creek Bridge	L6.02
2.0	BIKE CROSSINGS	
2.1	Primary Road Crossing at Intersection - With Pedestrian Activated Warning System Light	L6.03
3.0	SECTION NOT USED	
4.0	RAILINGS AND BARRIERS	
4.1	Boardwalk Railing	L6.03
4.2	Boardwalk Curb	L6.03
4.3	Boardwalk Curb Detail	L6.03
4.4	Post-Rail Elevation Detail	L6.03
4.5	Post-Rail Section Detail	L6.03
4.6	Split Rail Fence	L6.04
5.0	SECTION NOT USED	
6.0	PLANTING AND REVEGETATION	
6.1	Decommissioned Trail Restoration	L6.04
6.2	Trail Corraling	L6.04
6.3	Shrub Planting	L6.04



BRIDGE SECTION

NOTE:
1. CONDUIT COULD BE ATTACHED UNDER FRAMING TO ALLOW FOR (2) 2" CONDUIT RUNS UNDER THE FRAMING FOR WATER QUALITY AND FLOOD MONITORING EQUIPMENT BY OTHERS.
2. BRIDGE ELEVATION IS DESIGN PER CURRENT FEMA MAPPING. FINAL DESIGN TO REFINE BRIDGE ELEVATION BASED ON FLOODPLAIN MODELING AND TO ALLOW BRIDGE ELEVATION TO BE HIGH ENOUGH TO ALLOW TYPICAL STORM DRIVEN DEBRIS TO FLOW UNDER BRIDGE.



3 Trout Creek Bridge
N.T.S.

1.8

ISSUE DATE: January 2016

REVISIONS

DRAWN: SG/BM REVIEWED: SG/BM

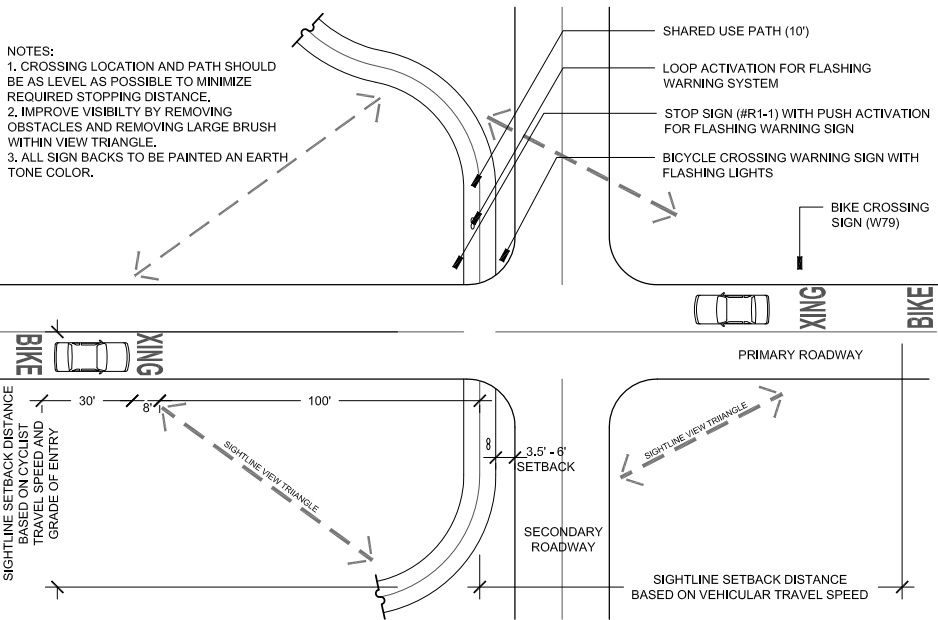
Preliminary
Design Project
Submittal

PROJECT NUMBER: 5416

Site Details

SHEET NUMBER

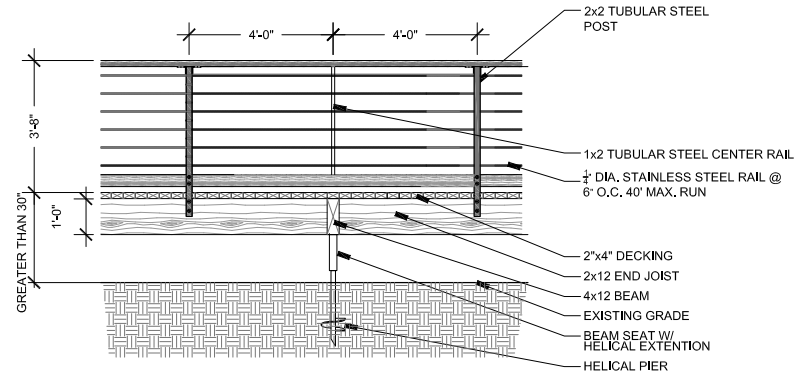
L3.02



1 Primary Road Crossing at Intersection - With Ped Activated Warning System Light

1"=30'

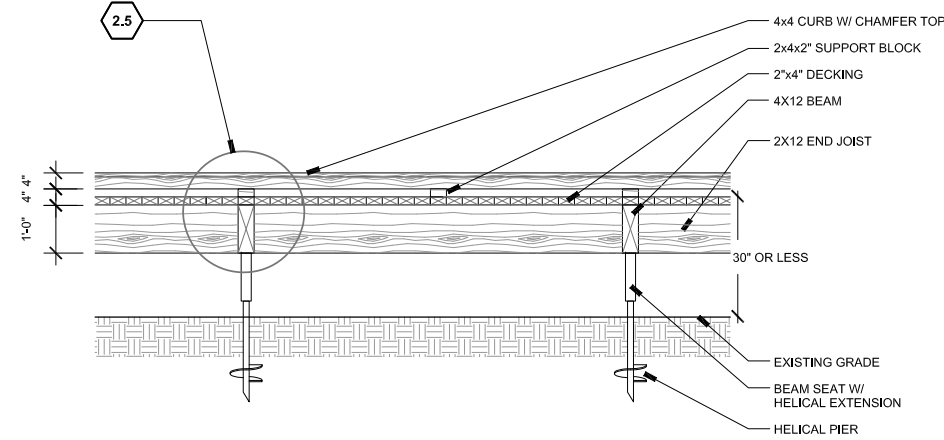
2.1



2 Boardwalk Railing

3/8"=1'

4.1

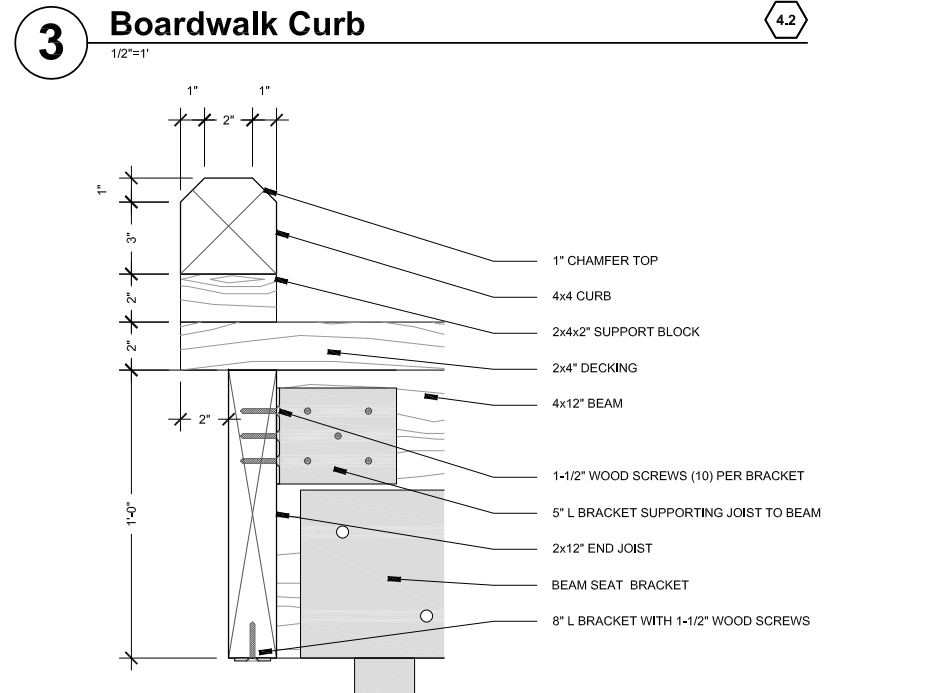


3 Boardwalk Curb

1/2"=1'

4.2

3

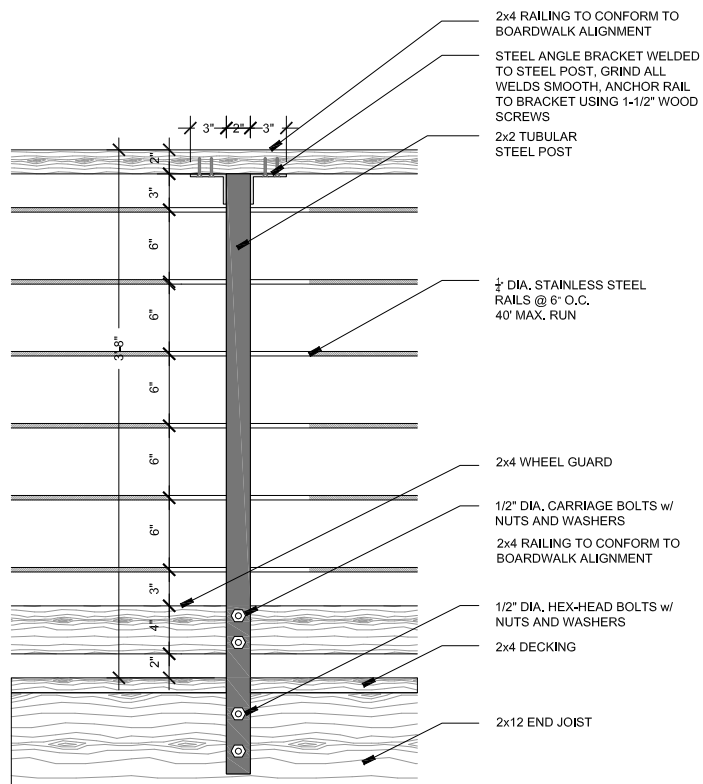


4 Boardwalk Curb Detail

3/8"=1'

4.3

4

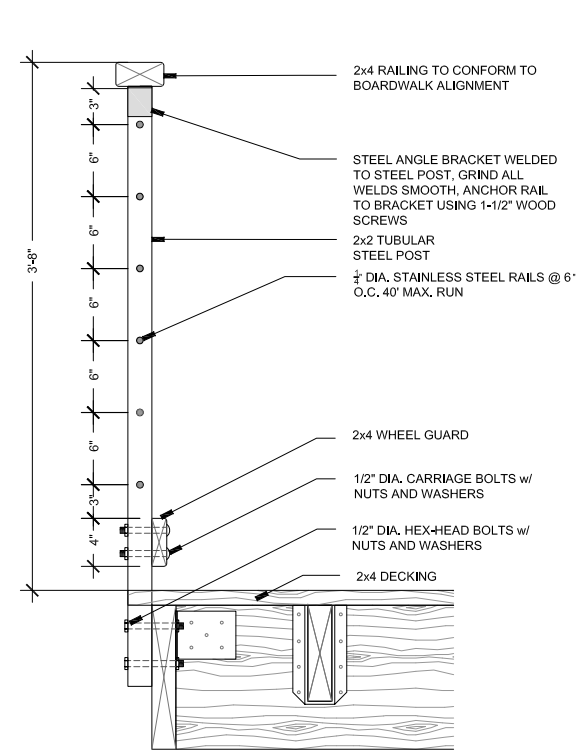


5 Post-Rail Elevation Detail

1-1/2"=1'

4.4

5



6 Post-Rail Section Detail

1-1/2"=1'

4.5

6

SITE DETAIL KEYNOTES:

KEYNOTE	DETAIL/SHEET	DETAIL/SHEET
1.0 PAVING AND BOARDWALKS		
1.1 10' Asphalt Trail On Grade	L3.01	
1.2 Decking Layout	L3.01	
1.3 12' Boardwalk With Rail	L3.01	
1.4 12' Boardwalk No Rail	L3.01	
1.5 Raised Asphalt Trail On Permeable Fill	L3.01	
1.6 Helical Beam Bracket Extension	L3.02	
1.7 Boardwalk End Joist Connection	L3.02	
1.8 Trout Creek Bridge	L3.02	
2.0 BIKE CROSSINGS		
2.1 Primary Road Crossing at Intersection - With Pedestrian Activated Warning System Light	L3.03	
3.0 SECTION NOT USED		
4.0 RAILINGS AND BARRIERS		
4.1 Boardwalk Railing	L3.03	
4.2 Boardwalk Curb	L3.03	
4.3 Boardwalk Curb Detail	L3.03	
4.4 Post-Rail Elevation Detail	L3.03	
4.5 Post-Rail Section Detail	L3.03	
4.6 Split Rail Fence	L3.04	
5.0 SECTION NOT USED		
6.0 PLANTING AND REVEGETATION		
6.1 Decommissioned Trail Restoration	L3.04	
6.2 Trail Corraling	L3.04	
6.3 Shrub Planting	L3.04	



**SOUTH TAHOE GREENWAY
PHASE 1B AND 2
CALIFORNIA TAHOE CONSERVANCY
SOUTH LAKE TAHOE, CALIFORNIA**

ISSUE DATE: January 2016

REVISIONS

DRAWN: SG/BM REVIEWED: SG/BM

**Preliminary
Design Project
Submittal**

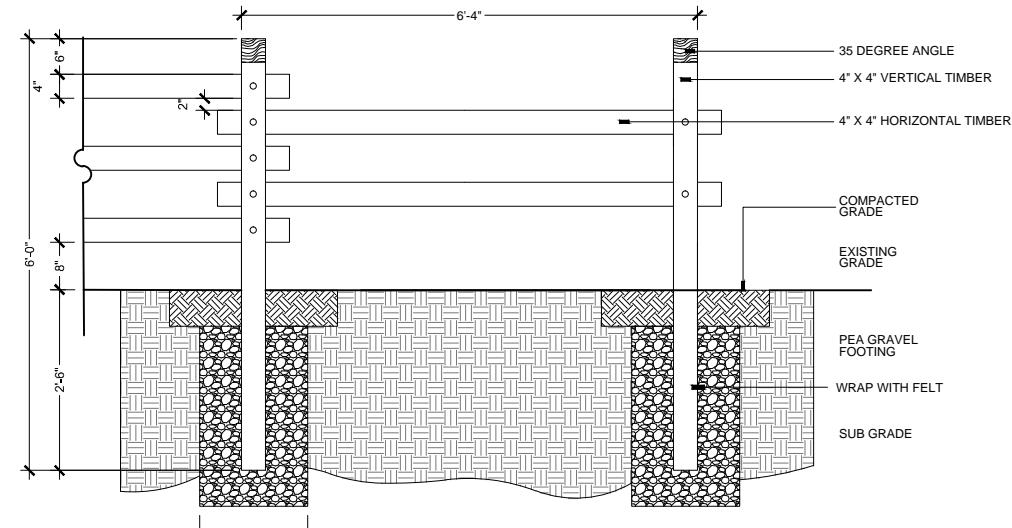
PROJECT NUMBER: 5416

Site Details

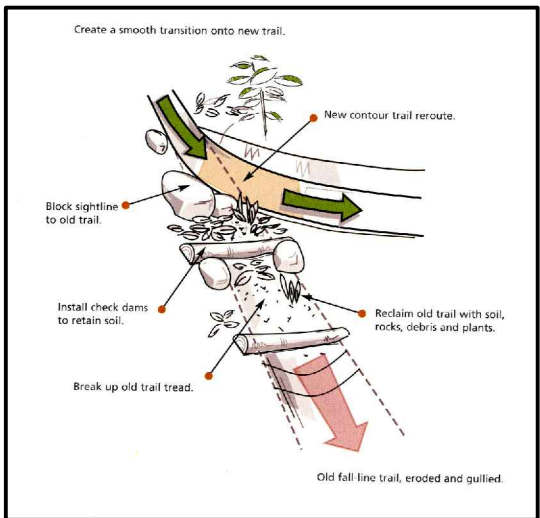
SHEET NUMBER

L3.03

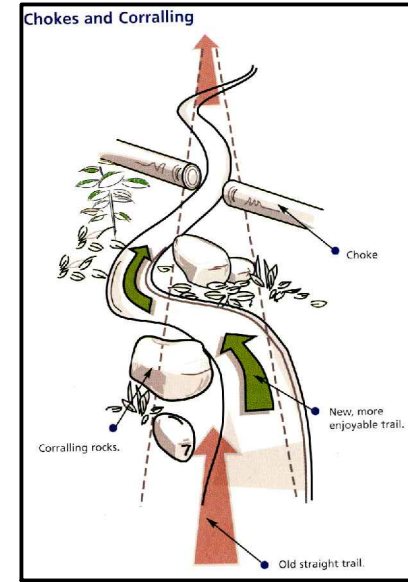
NO.	DESCRIPTION	DATE



1 Split Rail Fence
3/4"=1'
4.6

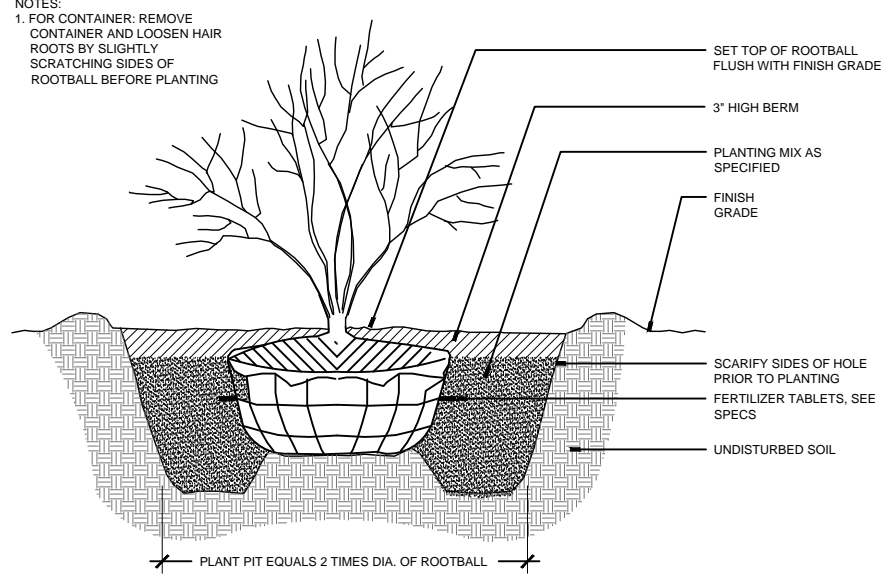


2 Decommissioned Trail Restoration
N.T.S.
6.1



- NOTES:
- INCREASE INTEREST
 - MANAGE SPEED
 - CREATE DRAINAGE OPPORTUNITIES

3 Trail Corraling
N.T.S.
6.2



4 Shrub Planting
N.T.S.
6.3

- NOTES:
1. FOR CONTAINER: REMOVE CONTAINER AND LOOSEN HAIR ROOTS BY SLIGHTLY SCRATCHING SIDES OF ROOTBALL BEFORE PLANTING